



KOKKOLAN UA 60 JUHLARALLI 25-26.9.2021

RALLY GUIDE

Index

1	General info.....	3
1.1	Rally Guide	3
1.2	Bulletins.....	3
1.3	Official Notice Board	3
1.4	Contacts	3
1.4.1	Rally HQ:.....	3
1.4.2	Media:	3
1.5	CRO.....	4
1.6	Important phone numbers.....	4
2	Before competition	5
2.1	Schedule	5
2.2	Administrative check.....	5
2.3	Scrutineering	6
2.4	Service area and trailer park	8
2.4.1	Map Rally HQ, start, Service A-C and finish (Market square and Cityhall area)	8
2.4.2	Map Service D and E (Pedersöre)	9
2.5	Reconnaissance	10
3	During the competition	10
3.1	Competition start	10
3.2	Route	10
3.3	At the special stage	11
3.3.1	Start procedure	11
3.3.2	3.3.2. Procedure at the Time Control	11
3.3.3	Stopping at the special stage and retirement	11
3.3.4	Retirement	11
3.3.5	Cancellation of the special stage	11
3.3.6	Retirement from the Leg 1 and continuing to the Leg 2	11
3.4	Services	12
3.4.1	Service A	12
3.4.2	Service B	12
3.4.3	Service C (classes 1-18).....	12
3.4.4	Service D (classes 1-18)	12
3.4.5	Service E (classes 1-7).....	12
3.5	Refuelling	12
3.6	Finish of the competition	12
3.7	More information.....	13

1 General info

1.1 Rally Guide

Start by reading the competition regulations and the Rally Championship Series Regulations, which contains plenty information you need. The regulations are not repeated in this guide. However, Bulletin 1 is published also in this Rally Guide.

We have collected other informations for your help to this Rally Guide.

Some of this Rally Guide is part of the regulations. The references to the Rally Guide are mentioned in the regulations or bulletins.

Rally HQ officers and CRO are happy to assist you if needed.

1.2 Bulletins

- Bulletin 1 in the attachments

1.3 Official Notice Board

Official Notice Board is at the website www.juhlaralli.kokua.fi.

1.4 Contacts

1.4.1 Rally HQ:

- Wanha Kalahalli
- Kauppatori 3
- 67100 Kokkola
- toimisto@kokua.fi

Opening hours:

- Friday 24.9.2021 klo 8:00 – 16:00
- Saturday 25.9.2021 klo 8:00 – Sunday 26.9.2021 klo 01:00
- Sunday 26.9.2021 klo 7:30 – 17:00

1.4.2 Media:

- Kokkolan Kaupungintalo
- Kauppatori 5
- 67100 Kokkola

Opening hours:

- Saturday 25.9.2021 klo 8:00 – Sunday 26.9.2021 klo 01:00
- Sunday 26.9.2021 klo 7:30 – 17:00

1.5 CRO



Marjut Haiko / Tel. 040 763 7387 / english



Anssi Räikkönen / Tel. 044 966 7106

You can reach the CROs by phone or WhatsApp during the competition.

1.6 Important phone numbers

- Emergency number 112
- Police 112
- Retirements 041 754 9143
- Hospital emergency number 116117
- Competition doctor Tommi Hotakainen 040 643 3316
- Tow service: Yleiskuljetus Team Kastren 0400 389 022
- Tow service: Kokkolan hinaus ja rengaspalvelu 0400 450 466

Organizer doesn't have a contract for towing services.

2 Before competition

2.1 Schedule

17.9.2021	Friday
	Publication of the entry list and the Rally Guide in KITI and at competitions website www.juhlaralli.kokua.fi
22.9.2021	Wednesday
	Booking for scrutineering times closes at https://slotti.fi/booking/rallism
24.9.2021	Friday
klo 08:00	Rally HQ opens
klo 08:00	Administrative check and collecting of the materials starts
klo 08:00	Reconnaissance material collecting starts (classes 1-7 and 15-17)
klo 09:00	Reconnaissance starts (classes 1-7 and 15-17)
klo 16:00	Rally HQ closes
klo 22:00	Reconnaissance ends (classes 1-7 and 15-17)
25.9.2021	Saturday
klo 08:00	Rally HQ opens
klo 10:00	Scrutineering starts
klo 10:00	Administrative check and collecting of the materials starts (classes 8-14 and 18-22)
klo 11:00	Stewards 1. meeting. Kokkola Cityhall
klo 12:00	Publication of start list, completed every 30 min
klo 15:45	Start of the Leg 1
klo 18:00	Service A Kokkola
approx. klo 21:15	Service B Kokkola
klo 22:25	Overnight in Park Ferme; Kallentori shopping centre parking hall, Pitkäsillankatu 15, 67100 (classes 1-18)
klo 23:30	Podium and prize giving ceremony by the provisional results at Kokkola Market square (classes 19-22)
klo 23:45	Publication of the provisional results for classes 19-22.
26.9.2021	Sunday
klo 01:00	Rally HQ closes
klo 01:00	Publication of the start list for leg 2 at the Official Notice Board at https://juhlaralli.kokua.fi
klo 07:30	Rally HQ opens
klo 08:05	Start of the competitions Leg 2. Park Ferme; Kallentori shopping centre parking hall,
klo 08:05	Service C Kokkola
klo 10:00	Service D Klacken, Lillbyvägen 119, 68940 Lillby Pedersöre
klo 11:20	Service E Klacken, Lillbyvägen 119, 68940 Lillby Pedersöre (luokat 1-7)
klo 13:45	Podium and prize giving ceremony by the provisional results at Kokkola Market square (classes 1-18)
approx. klo 14.00	Competitions provisional results are published for classes 1-18

2.2 Administrative check

Identity checks are made at the reconnaissance and competition material collecting at the Rally Office in Wanha Kalahalli Kokkola. When entering the Rally Office, please keep distance to others and remember good hand hygiene.

Competitors receive all the materials needed in the competition in the administrative check excluding time keeping transponders which are given in the competitions start area.

When collecting the material the competitor (driver or co-driver) must show a drivers licence or official identity card to the organizers officer.

Competitors are responsible that all their documents are in order and valid.

Documents you must fill and sent advance to the organizer are at

<https://juhlaralli.kokua.fi/ilmoitustaulu/> (drivers licence or official identity card, phone numbers during the competition, information to the announcer and team members).

The documents must be sent no later than 20.9.2021 klo 22.00 by email sihteeri@kokua.fi.

The email subject must be competitor number and competitors name.

If there comes any changes to your entry (co-driver, or vehicle) please inform the changes to the the secretary by email sihteeri@kokua.fi

Schedule:

Friday 24.9.2021

klo 08.00-13.00

Reconnaissance classes

Saturday 25.9.2021

Starting at 10:00

All the other classes

Jaettava materiaali

- 1 road book
- 2 route maps
- 2 recce stickers (classes 1-7 and 15-17)
- 1 service car sticker
- 2 competitors numbers with Hallix ad
- 2 competitors numbers to the rear side windows
- 1 ad BHMontage to the bonnet
- Timecard are handed to the classes by following order
 - o Time cards 1-4 to SM classes 1-7 competitors including special stages 1-10.
 - o Time cards 1-3 to RSJM classes 8-18 competitors including special stages 1-9.
 - o Time cards 1-2 to classes 19-22 competitors including special stages 1-6.

2.3 Scrutineering

Scrutineering is held in the Kokkolas technical college at **Talonpojankatu 8A, 67600 Kokkola.**

Competitors must book their scrutineering time at the Slotti system

<https://slotti.fi/booking/rallism/> between Saturday 18.9.2021 klo 8:00 and Wednesday 22.9.2021 klo 22:00. **Classes 1-7 scrutineering is klo 10 – 13.**

Attention! Only two (2) persons/car to the scrutineering.

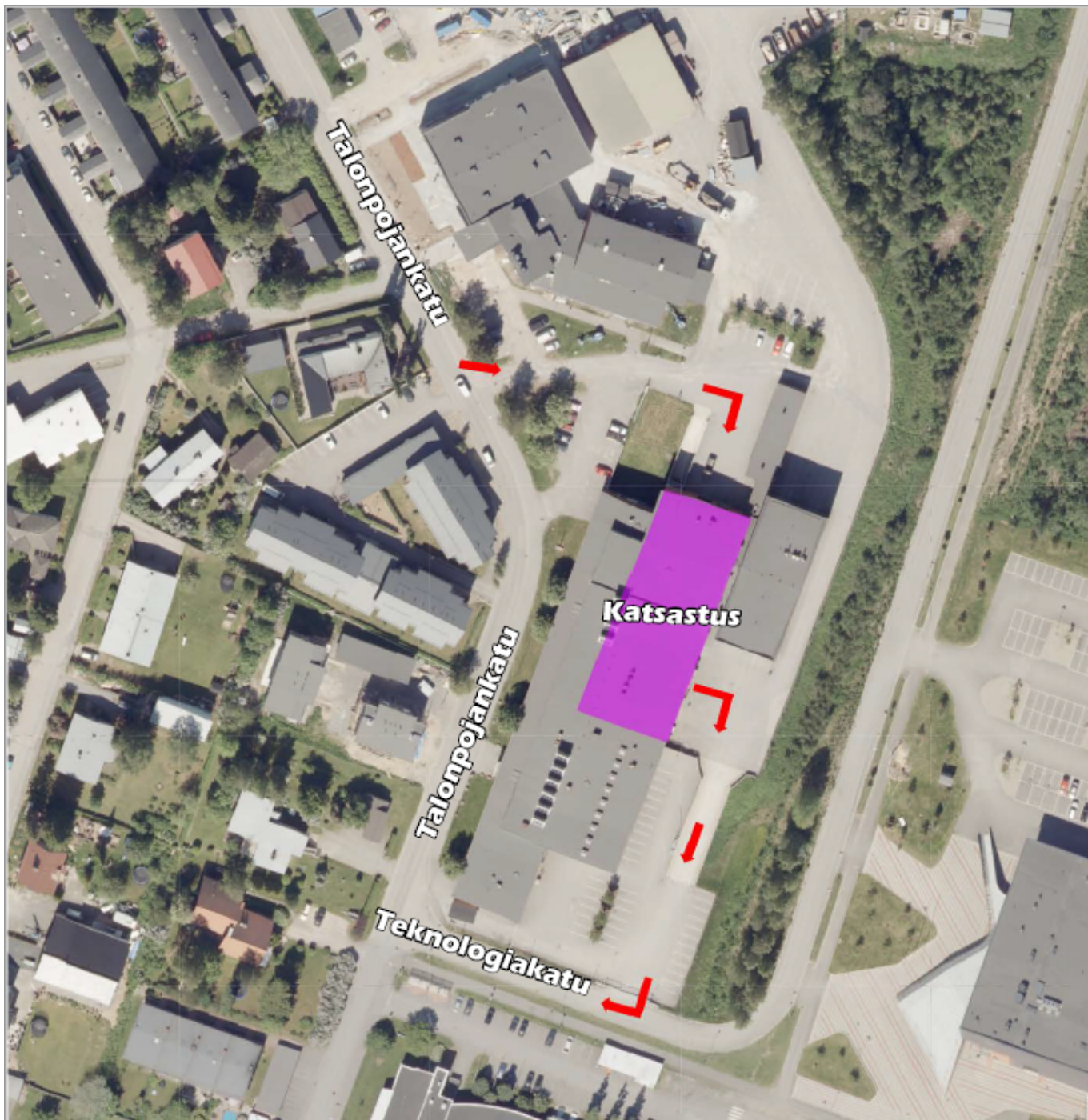
Parts to be sealed and registered for the competition are checked and sealed, if necessary, on Saturday 25.9.2021 at the scrutineering.

Scrutineering Officers:

Riikka Raatikainen tel. 050 359 8510

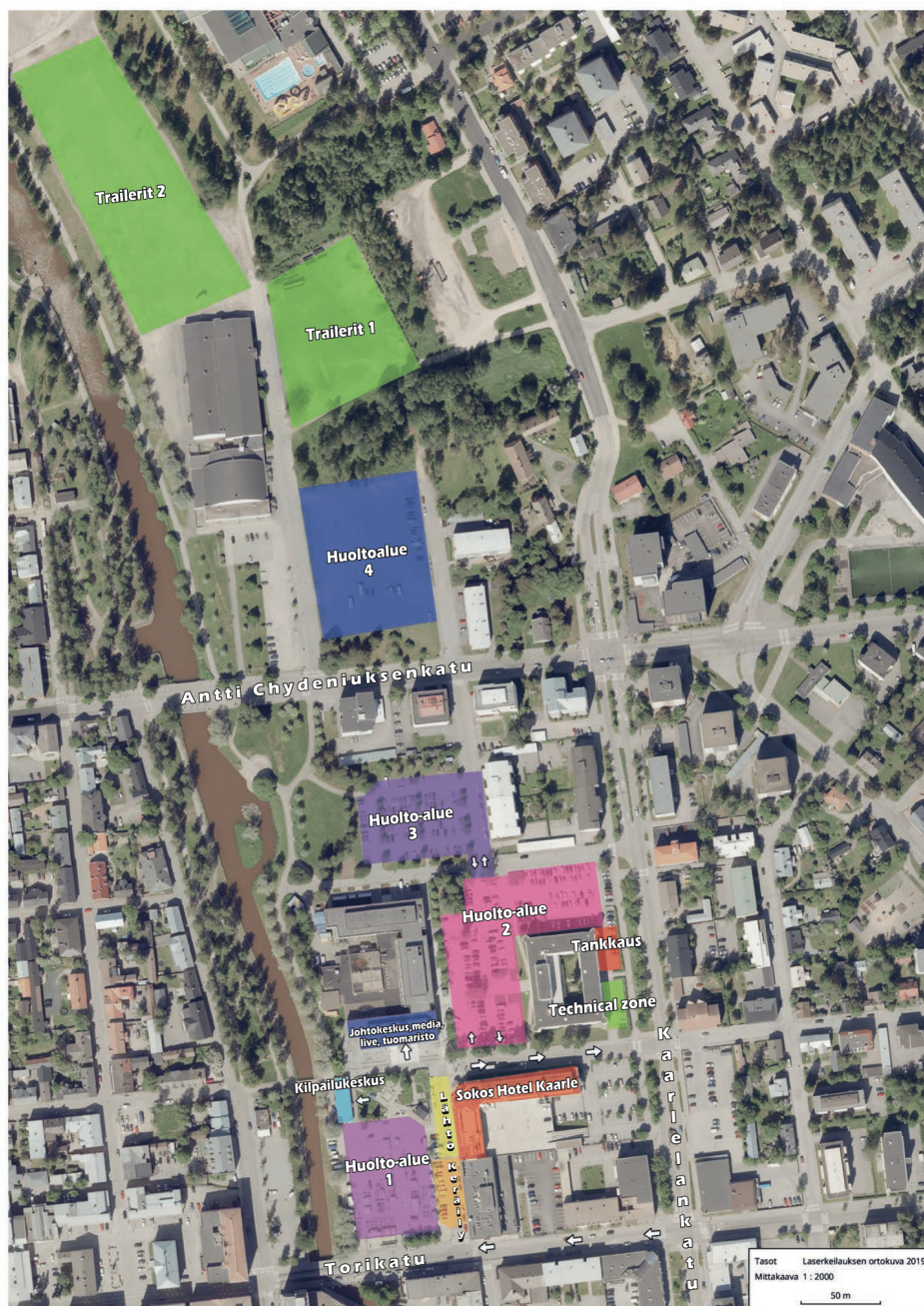
Jukka Pöyhönen tel. 0400 862 959

SCRUTINEERING MAP



2.4 Service area and trailer park

2.4.1 Map Rally HQ, start, Service A-C and finish (Market square and Cityhall area)



Service area is at the parking lot surrounding the Kokkola Cityhall.

Trailer park is behind the Kokkola Urheilutalo at the address Vapaudentie 1, 67100 Kokkola.

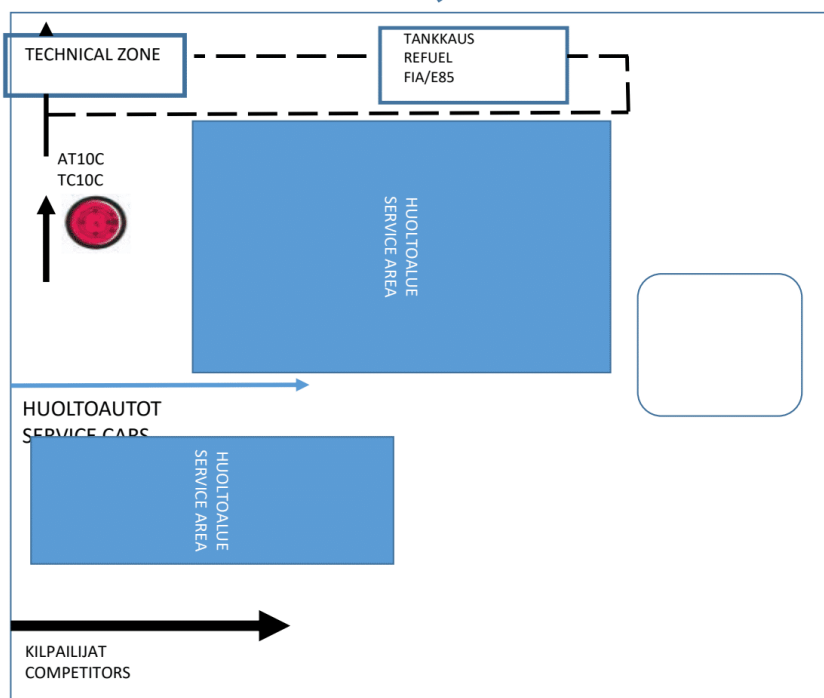
When arriving to Kokkola, you first unload the vehicle at the trailer park and then drive the vehicle to the service area.

Service area opens on Saturday 25.9.2021 at 7.00.

Map from the service area and specific information about the service is published at the Official Notice Board on Wednesday 22.9.2021.

2.4.2 Map Service D and E (Pedersöre)

Klacken P-lot, Lillbyvägen 119, 68940 Lillby



2.5 Reconnaissance

The maximum speed limit is 80 km/h during reconnaissance on all special stages, unless a lower limit is indicated by traffic signs or signs placed by the organizer. The organizer and police will control speeds used as well as the manner of driving during reconnaissance. Reconnaissance is limited, you can reconnaissance every special stage two (2) times and this rule concerns also the special stages that are driven two times.

You must also obey the STOP-signs placed by the organizer to the dangerous crossroads. Driving against the direction of the rally is prohibited.

Attention! Competitor itself is responsible for all the damages happened during the reconnaissance

At the special stages there are all the signs placed according to the road book during the reconnaissance in the following way:

- Turning signs etc. signs are placed at the right measured spots with the actual signs.
- TC-, start-, radio point-, safety point- finish and stop-signs are marked at the right spot with a temporary sign.

3 During the competition

3.1 Competition start

Competitions start: according to the "Map Rally HQ, start, Service A-C and finish (Market square and Cityhall area)" in front of the Sokos Hotel Kaarles terrance. Competitors are asked to enter to the start area half an hour before their start time where the time keeping ponders are given.

GPS tracking device assembly info is on the Official Notice Board.

3.2 Route

Competition route is changed after the regulations are published. On of the original special stage on Saturday has been cancelled. This effects to the number of special stages, numbering of the special stages, competitions schedule and the total distances.

Start of the competition is moved one hour forward and the start is on Saturday 25.9.2021 at 15.45.

New total distances to the competition

- Classes 1-7 total distance 385 km including 10 special stages, which total ss distance is 128 km
- Classes 8-18 total distance 338 km including 9 special stages, which total ss distance is 105 km

- Classes 19-22 total distance 171 km including 6 special stages, which total ss distance is 54 km

3.3 At the special stage

3.3.1 Start procedure

Start to the special stage happens with electronic start lights by every minute. The flag is used in case of the start light doesn't work.

False start is controlled with photocell or by the special stage start officer and False start sign is indicated to the crew at the special stage finish.

3.3.2 3.3.2. Procedure at the Time Control

Despite of the regulations, ASN regulations art. 15.4., the competitors has right to do inscription to the time cards. Because of the COVID-19 situation the time control marshalls does not handle the time cards and the competitors themself write the time shown by the marshall to the time card.

3.3.3 Stopping at the special stage and retirement

Warning triangle: If competitor has to stop on the special stage after an accident or because of any other reason the warning triangle must be placed to alert other competitors.

SOS & green OK

Show the A3 size SOS sign to the other competitors and the marshalls if you need medical help. After they see the sign they know to call help. There is SOS phone number printed to the competition number. If you see some other competitor reaching for help you have to stop to give help to the injured. In case you don't stop the COC has right to disqualify you from the competition. If you don't need any medical help, show the OK sign to the marshalls and other competitors. **Read the GPS-tracking device info and SOS/OK putton info. The info is on the Official Notice Board at <https://juhlaralli.kokua.fi/ilmoitustaulu/>**

3.3.4 Retirement

If competitor has to retire from the competition they must immediately contact the competitions command center: 041 754 9143.

Every retired competitor is required to hand their time keeping transponder and GPS tracking device to the nearest TC, Sweeper car or Rally Office as soon as possible.

3.3.5 Cancellation of the special stage

If the special stage has to cancel because of an accident or for other important reasons the special stage can be used as a road section or the alternative road is followed when moving to the next special stage. Organizer gives you the info about which way is used in the current situation.

3.3.6 Retirement from the Leg 1 and continuing to the Leg 2

You can find spesific info from the regulations article 13.

3.4 Services

- After SS 3 at the Kokkola Cityhall service area.

3.4.1 Service A

- 40 min (regrouping 0–31 min). Possible regrouping at the service area. TC 3C gives the starting time. Time card where the service time is marked must be visible at the vehicles dashboard.

3.4.2 Service B

- 60 min
- After SS 6 to classes 1-18 at the area surrounded the Kokkola Cityhall.
- Classes 19-22 do not enter service anymore so the TC 6C is their finish TC.
- Only defected GPS tracking devices are collected at the TC 6C. Otherwise the device can be left to the vehicle.
- At the Service B the crew or someone on behalf of them move their vehicle to the overnight. TC 6D at the Park Ferme is early check in permitted.
- If competitor wants to use Flexi Service, they must inform it at the TC 6C. The latest starting time for the Flexi service is at 23.00. Flexi Service is marked to the time card at the Service start spot and the time card must be visible at the vehicles dashboard.

3.4.3 Service C (classes 1-18)

- From Parc Ferme TC 6E to the service area. Service time 15 min which includes to the road section TC 6E – TC 6F.

3.4.4 Service D (classes 1-18)

- 20 min includes to the road section TC 7B – TC 7C. (TC 7B gives the provisional time to TC 7C)
- Service area Klacken at Pedersöre.

3.4.5 Service E (classes 1-7)

- 20 min includes to the road section TC 9B – TC 9C. (TC 9B gives the provisional time to TC 9C)
- Service area Klacken at Pedersöre.
- Classes 8-18 drive from TC 9B straight to the finish to TC 10C.

3.5 Refuelling

Refuelling is only allowed at the gas stations and/or the refuelling zones marked in the road book (also from the own cans, E85, FIA- or 2T fuel users). The refuelling time is included to the road section time.

Please note, that the gas stations marked in the road book won't all take cash as a payment. The fuelling distances are published in the competitions schedule at the Official Notice Board.

3.6 Finish of the competition

Finish of the competition is at Kokkola Market square area where all the transponders are collected from the competitors.

After the finish the competitors how a receiving a trophy a gathered with their vehicles waiting for the podium at the Market square.

The other competitors are guided to the service area.

3.7 More information

Accommodation:

<https://www.sokoshotels.fi/fi/kokkola>

<https://www.visitkokkola.fi/>

Restaurants during reconnaissance

Organizers choices:

SS on Saturday 1-6

www.kalviankaffeli.fi

Kälviäncatu 16, 68300 KÄLVIÄ

SS on Sunday 7-10

<http://www.uffes.fi/>

Purmontie 471, 68930 PURMO

Lunch buffet to 16.00.

4 Attachment: Bulletin 1

Bulletin 1

Change 1. Original SS 4 is cancelled. This affects to following matters.

1. Competitions schedule changes
 - Scrutineerings start time has changed. Start is klo 10:00.
 - Start of the competitions is now 15:45.
 - Rally Office opening times.
 - 24.9.2021 Friday klo 8:00 – 16:00
 - 25.9.2021 Saturday klo 8:00 – 26.9.2021 Sunday klo 01:00
 - 26.9.2021 Sunday klo 7:30-17:00
 - Media Center opening times.
 - 25.9.2021 Saturday klo 8:00 – 26.9.2021 Sunday klo 01:00
 - 26.9.2021 Sunday klo 7:30-17:00
2. Special stages quantity and numbering has changed
 - Special stage total 10pcs.
 - SS 5 has changed to SS 4, SS 6 has changed to SS 5 etc...
3. Total distances to the competition has changed. Route totals by class:

Class	Total quantity of the special stages	Total route distance	Total special stage distance
Classes 1-7	10 pcs (SS1-SS10)	385 km	128 km
Classes 8-18	9 pcs (SS1-SS9)	338 km	105 km
Classes 19-22	6 pcs (SS1-SS6)	171 km	54 km

Change 2. Media center address has changed. The new address is

Kokkolan kaupungintalo / Kokkola Cityhall
Kauppatori 5
67100 Kokkola

Change 3. Time cards are handed to the competitor at the collecting of the materials and the cards are collected away from the competitor at the overnight and finish.

Change 4. GPS tracking device are not collected at the overnight.

Kokkola 16.9.2021
Kokkolan UA 60 v Juhlaralli



Jyrki Lampela
Clerk of the Course