

MOTUL



Hyötyautot

GRÄNO

HIGHPEAK



RALLI SM

rallism.fi



rallism



@RalliSM



rallinsmsarja

RALLIN
SJM



energy

SM Länsirannikon Ralli 2021



Rally Guide



LIETO



RAMIRENT

DecoWorks

AC **AUTO-CENTER**
Raisio | Turku | Forssa | Loimaa



lansirannikonralli.fi

**MOTUL****MICHELIN**

Hyötyautot

GRANO**HIGHPEAK**

DEAR COMPETITORS, PLEASE READ THESE INSTRUCTIONS CAREFULLY AND FOLLOW THEM. MANY GUIDELINES AND REGULATIONS ARE DUE TO THE COVID -19 PANDEMIC WHICH ARE THE PART OF RULES OF COMPETITION.

TABLE OF CONTENTS

1. PROGRAM AND IMPORTANT DATES
2. CONTACT INFORMATION
3. OFFICIAL NOTICEBOARD
4. MEDIA CENTER
5. COMPETITORS RELATIONS OFFICERS
6. IMPORTANT PHONE NUMBERS
7. IMPORTANT - BEFORE THE COMPETITION
 - 7.1 ACCOMMODATION
 - 7.2 COMPETITORS DRESSING AND SHOWER FACILITIES
 - 7.3 REGISTRATION AND COLLECTION OF EVENT MATERIALS
8. SAFETY SCRUTINEERING AND CHECKING OF THE CAR DOCUMENTS
9. SAFETY TRACKING DEVICE – DEVICE PICKUP AND RETURN
10. RECONNAISSANCE
11. ROUTE AND SCHEDULE
12. INFORMATION ABOUT SPECIAL STAGES
13. SERVICE AREAS AND SERVICE
 - 13.1 Flexi-service
 - 13.2 Refueling
14. RALLY FINISH AND PRIZE GIVING CEREMONY
15. IMPORTAT – DURING RALLY

APPENDIX

COVID-19 INSTRUCTIONS
MAP OF RALLY CENTER
SCRUTINEERING GUIDE
GPS TRACKING INSTALLATION INSTRUCTIONS

**RAMIRENT**



Hyötyautot



1. PROGRAMM AND IMPORTANT DATES

21.5.2021 Approved Entry List and Rally Guide are published at KITI portal and at the website www.lansirannikonralli.fi

26.5.2021
at 1:00 Competitors Safety Scrutineering time booking ends in <https://slotti.fi/booking/rallism/>

26.5 at 21:00 Competitors to enter team and car information ends.

27.5.2021 **Thursday**
at 18:00-20:00 Material for reconnaissance starts, classes 1-8 ja 14-18, V-Wauhtipiste, Kuormakatu 4, 20380 Turku.

28.5.2021 **Friday**
at 7:00 Rally Office opens, Rally Center, Ahtonkaari 5, 21420 Lieto.
at 7:00 Material for reconnaissance continues at Rally Office, classes 1-8 and 14-18, Rally Center, Ahtonkaari 5, 21420 Lieto.
at 8:00 Service Park opens
at 7:00-17:30 Reconnaissance begins for classes 1-8 ja 14-18
at 10:00 Media Center opens, Rally Center, Ahtonkaari 5, 21420 Lieto.
at 13:00-17:50 Rally Car Safety Scrutineering, classes 1-8.
VAK Huoltopalvelut Oy, Avantintie 24, 21420 Lieto.
at 17:30 Publication of Start list for Section 1, classes 1-8, at the Virtual Notice Board at www.lansirannikonralli.fi
at 19:01 Start of the Section 1, classes 1-8, Rally Center, Ahtonkaari, 21420 Lieto, classes 1-8.
at ca. 21:18 Service A
at ca. 21:33 Overnight Parc Fermè.
at 23:00 Rally Office and Media Centre closes.

29.5.2021 **Saturday**
at 7:00 Rally Office opens, Rally Center, Ahtonkaari 5, 21420 Lieto.
at 7:00 Publication of Start list for Section 2 at the Virtual Notice Board at www.lansirannikonralli.fi
at 7:00 Collection of Event materials begins for classes 9-13 and 19-23.
at 7.15-9.35 Rally Car Safety Scrutineering, VAK Huoltopalvelut Oy, Avantintie 24, 21420 Lieto.
at 7:45 Parc Fermè exit.
at 7:55 Start of the Section 2, Rally Center, Ahtonkaari, 21420 Lieto.
at 9:00 Media Center opens, Rally Center, Ahtonkaari, 21420 Lieto.
at ca. 10:25 Service B.
at n. 13:28 Service C.
at 17:45 Rally Finish.
Prize giving ceremony immediately rally finish, based on unofficial results.
at 18:45 Official results, classes 1-7
at 19:00 Official results, classes 9-13
at 19:15 Official results, classes 8 ja 15-22



2. CONTACT INFORMATION

RALLY OFFICE

Rally Center, Ahtonkaari 5, 21420 Lieto
Phone +358 40 568 9205
tanja.tuomisto@turunua.fi

OPENING HOURS

Friday at 7:00 – 23:00
Saturday at 7:00-

3. OFFICIAL NOTICEBOARD

The official Virtual Notice Board is located at www.lansirannikonralli.fi

4. MEDIA CENTRE

Rally Centre, Ahtonkaari 5, 21420 Lieto
Press Officer Juho Koski, +358 50 557 4848, juho.koski@turunua.fi

Opening hours

Friday 27.9 at 10:00-23:00
Saturday 28.9 at 9:00- End of the Rally

5. COMPETITORS RELATIONS OFFICERS

Nina Suvanto
Phone +358 40 761 0504

Aulis Ahonen
Phone. +358 50 5355 100

6. IMPORTANT PHONE NUMBERS

Emergency number 112
Central hospital, phone +358 2 313 8800
Towing service Falck, phone. +358 207 700 700

7. IMPORTANT - BEFORE THE COMPETITION

7.1 ACCOMMODATION

Accommodation in Turku: <https://www.sokoshotels.fi/en/turku/original-sokos-hotel-kupittaa>

7.2 COMPETITORS DRESSING AND SHOWER FACILITIES

There are no dressing and shower rooms in the service park area.

7.3 REGISTRATION AND COLLECTION OF EVENT MATERIALS

Competitors are required to return the "Reconnaissance information" and "Announcer information" forms electronically at the latest 26.5.2021 at 21.00. Forms can be found at the rally's official web page www.lansirannikonralli.fi/kilpailijat.

At the time of the registration only the collecting person's identifications will be checked. When registering via KIT1 portal the competitor makes sure that all paper work are in order and according to the sporting regulations. 1. Driver is obligated to inform in case of losing driving rights after registering an entry.

Changes after the registration (driver or car changes etc) must be informed with Change to entry form from rally's official web page www.lansirannikonralli.fi/kilpailijat. Form must be returned at the latest 26.5.2021 to secretary of the rally, tanja.tuomisto@turunua.fi.

27.5.2021 at 18:00-20:00 V-Wauhtipiste, Kuormakatu 4, 20380 Turku. **Only 1 person**
Reconnaissance material and tracking devices, classes 1-8 ja 14-18.

28.5.2021 at 7:00- Rally Center, Ahtonkaari 5, 21420 Lieto. **Only 1 person**
Reconnaissance material and tracking devices in Rally Office, classes 1-8 ja 14-18.

29.5.2021 at 7:00 Rally Center, Ahtonkaari 5, 21420 Lieto. **Only 1 person**
Event material and tracking device in Rally Office, classes 9-13 ja 19-23.

Material:

- Road book 1 pc
- Route map 2 pcs
- Reconnaissance car id 2 pcs (classes 1-8 ja 14-18)
- Service car id 1 pc
- Competition numbers 2 pcs
- Rally magazine
- Wrist bands for service area max 6 pcs

8. SAFETY SCRUTINEERING AND CHECKING OF THE CAR DOCUMENTS

Competitors safety scrutineering- time needs to be booked from <https://slotti.fi/booking/rallism/> before **26.5.2021 at 1:00**.

Time for Car documents check needs to be booked before **26.5.2021 at 21:00**. Send the documents according to the scrutineering guide.

Rally Car Safety Scrutineering and drivers driving equipment checkup, VAK Huoltopalvelut Oy, Avantintie 24, 21420 Lieto.

For classes 1-8 Friday 28.5 at 13:00 – 17:50. **Only two persons per car.**

Classes 9-23, Saturday 29.5 at 7:15 – 9:35. **Only two persons per car.**

Safety Scrutineering end 10 minutes after the last booked time.

Entering the Safety Scrutineering, all advertisements and competition numbers must be in place.

All the spare parts that needs to be registered or checked, are checked and sealed during the Safety Scrutineering. Technical checkup (after the rally) V-Wauhtipiste Oy, Kuormakatu 4, 20380 Turku

In classes 1 to 5 can use maximum 12 pcs of tyres. Filled tyre bar code form must be delivered no later than 28.5.2021 at 17:00. Send the document according to the scrutineering guide.

Chief Scrutineer Jaana Laaksonen tel, +358 50 5227 197

9. SAFETY TRACKING DEVICES - DEVICE PICK UP AND RETURN

GPS – tracking devices for classes 1- 8 and 14- 18 are given at the same time with the reconnaissance material. GPS-device is not needed to return before the end of the rally.

GPS – tracking devices for classes 9- 13 and 19- 23 are given at the same time with the event materials. Devices will be taken back at the end of the rally.

In case of retiring, the device must be taken to rally office or leave it to TC or sweeper car.



Hyötyautot



10. RECONNAISSANCE

Reconnaissance time 28.5.2021 starts at 7.00 and ends at 17.30.

Organizer provided two (2) reconnaissance car identifications must be fitted in the middle and up of the windscreen and to the right back side window and must be visible for the whole reconnaissance time.

Speed limit of 80 km/h is valid on all Special Stages during the reconnaissance unless a lower limit is indicated by traffic signs or signs placed by the organizer. Driving during the reconnaissance must not endanger or inconvenience other traffic or people living close by. Crews will only be permitted to enter and leave special stages through the start and finish during the reconnaissance. Driving in the opposite direction of the rally is prohibited. The organizer will control speed as well as the manner of driving during reconnaissance. The police will also supervise on the route and may penalize traffic infringements according to the Finnish Traffic Law. Special Stages may be driven only two (2) times through, including special stages driven twice in the rally. Organizer is controlling the amount of reconnaissance via GPS tracking devices.

Cautions during reco

These regulations follow our passion for motorsport and it's future. Remember that residents alongside rally route are the one's who allows us driving rally in the future. If our environment, residents of the area, other traffic will suffer from our behavior – rally has no future!



11. ROUTE AND SCHEDULE

28.5.2021	🕒 4:22	🕒 22:36	EK km	Siirtymä	Yhteensä	1.auto	Ajoaika
OSA1/LEG1			SS km	Liaison	Total	1st car	Time allowed
AT/TC0						19:01	
AT/TC1A				26,35	26,35	19:37	36 min
1 HALISOJA			7,50			19:40	max 13 min
AT/TC2A				11,27	18,77	20:05	22 min
2 OHENSAARI			9,49			20:08	max 16 min
AT/TC3A				12,26	21,75	20:37	24 min
3 HUJALA			6,29			20:40	max 11 min
AT/TC3C Huolto sisään/Service in				19,93	26,22	21:18	35 min
Technical zone 3 min, Huolto A/Service A							13 min
AT/TC3D Huolto ulos/Service out/Parc Fermé in				0,70	0,70	21:33	2 min
YHTEENSÄ OSA1/TOTAL LEG 1			23,28	70,51	93,79		
29.5.2021	🕒 4:20	🕒 22:38					
OSA2/LEG2							
AT/TC3E Parc Fermé out						07:45	
Renkaiden vaihtoalue/Tyre fitting zone							
AT/TC3F Lähtö osa 2/Start leg 2				0,70	0,70	07:55	10 min
Tankkaus / Refuel			23,28	74,41	97,69		
AT/TC4A				12,90	12,90	08:28	33 min
4 VINTALA			6,42			08:31	max 11 min
AT/TC5A				4,97	18,37	08:49	15 min
5 MAHLIO			8,13			08:52	max 14 min
AT/TC6A				5,93	14,06	09:14	16 min
6 SAUKONOJA			14,21			09:17	max 24 min
Tankkaus / Refuel			28,76	44,74	73,50		
AT/TC6C Huolto sisään/Service in				27,31	41,52	10:25	42 min
Technical zone 3 min, Regroup							15-0 min
Huolto B/Service B Flexi-service							30 min
AT/TC6D Huolto ulos/Service out						10:55	
AT/TC7A				30,49	30,49	11:38	43 min
7 VANHA KARUNA 1			5,15			11:41	max 9 min
AT/TC8A				11,46	16,61	12:07	23 min
8 PÖYLÄ 1			13,40			12:10	max 23 min
AT/TC9A				21,93	35,33	12:49	33 min
9 JUNTOLA 1			5,27			12:52	max 9 min
Tankkaus / Refuel			23,82	84,80	108,62		
AT/TC9C Huolto sisään/Service in				20,92	26,19	13:28	33 min
Technical zone 3 min, Regroup 27-0 min							27-0 min
Huolto C/Service C Flexi-service							30 min
AT/TC9D Huolto ulos/Service out						14:28	
AT/TC10A				30,49	30,49	15:11	43 min
10 VANHA KARUNA 2			5,15			15:14	max 9 min
AT/TC11A				11,46	16,61	15:40	23 min
11 PÖYLÄ 2			13,40			15:43	max 23 min
AT/TC12A				21,93	35,33	16:22	33 min
12 JUNTOLA 2			5,27			16:25	max 9 min
Tankkaus / Refuel			23,82	84,68	108,50		
AT/TC12C, Regroup in				20,77	26,04	17:00	33 min
AT/TC13A, Regroup out						17:10	10-0 min
13 AVANTI			1,93			17:13	max 4 min
AT/TC13B MAALI/FINISH				0,00	0,00	17:45	
YHTEENSÄ OSA2/TOTAL LEG2			78,33	221,26	299,59		
OSA1+OSA2/LEG1+LEG2			101,61	291,77	393,38		

12. INFORMATION ABOUT SPECIAL STAGES

Before driven special stages:

EK8/11: SM Mad-Croc Rally 2019 EK3/6 ja SM Teijo Talot Rally 2018

EK9/12: SM Teijo Talot Rally 2018 EK3, SM Rally Turku 2015 EK2

Special stages which some part has tarmac:

28.5.2021 EK1-3 wholly Tarmac, total 23,28 km.

29.5.2021 EK5 0,15 km, EK8/12 1,10 km ja EK13: 1,93 km.

Haystack and concrete blocks are used in the turns. They are clearly visible.

Chicanes on special stages 1 and 3 are not in place during reconnaissance but they are marked in the road and the road book.

13. SERVICE AREAS AND SERVICE

Only one central service area is in use, Rally Center, Ahtonkaari 5, 21420 Lieto. Service area has own recycling point for oil, aerosol and battery. Surface of the service area is rough; you may need to bring some wood under the jack.

Service is allowed only at this area. Service in other areas allows only to use the tools that are included in the rally car. Finnis Rally Championship rules 14.9 are valid in this area. Only one service car per one rally car can enter the service area. Label- "Huoltoauto" (=service car) must be attach to the service car windshield and it must be there for the whole rally.

If turbo or pop-off valve must be changed during rally, please contact scrutineers:

POP-OFF VALVE
Riikka Raatikainen
+358 50 359 8510

TURBO
Jaana Laaksonen
+358 50 5227 197

Chief of Service park: Janne Himberg tel. +358 400 542 880.

The service area cannot be accessed without the service car stickers provided by the organizer

13.1 Flexi-service

Regrouping can be held at competitors own service spot. TC gives a service start time for competitors; a service start time must be shown at car in service area. Flexi-service sign can be found on road book.

13.2 Refueling

Refueling is allowed only at gas station and refueling allowed only places that are marked in road book.

Refueling area:

Neste Oil Lieto, Haimiontie 25, 21410 Vanhalinna.

Liquid handling

We, as motorsport representatives must take great responsibility for environmental issues and notice all cautions while handling oils and liquids during rally.

Each service car must be fitted with 6 kg fire extinguisher with valid safety check. At service area all cars must have ground cover which is all liquid proof.

Smoking is allowed only at marked places.



Hyötyautot



14. RALLY FINISH AND PRIZE GIVING CEREMONY

The finish of the rally is in the rally center. Before getting to the finish, competitors who will get the prize are gathered to collection zone and organized to drive to the podium. Driving to the podium is allowed only by rally officers guidance.

All the prizes in all classes are given in the rally finish according unofficial classifications. Trophies are given in every class.

Finish Parc Fermé is not used in any class and all protests must be done before the car has arrived at finish. Protests informing number is +358 50 522 7197.

15. IMPORTANT - DURING RALLY

STARTING IN SPECIAL STAGES

Start for stages is shown with so called light-maneuver.

A false start will be detected by a manner of a photocell and competitor will be informed at the end of SS. If starting lights do not work, the start will happen with a flag.

STOPPING OR RETIRING ON THE SPECIAL STAGE

Using the car warning triangle: If competitor needs to stop during the Special Stage due to accident or some other reason, must the car warning triangle be placed to warn other competitors.

SOS & green OK.

If you need help (medical etc) because of an accident, show the SOS-sign to other competitors and officers. They know to organize help for you when they have seen the sign. If you see some other competitors SOS-sign, you must stop to give help, or you may be disqualified. If you don't need medical help, show the green OK- sign for other competitors and officers.

Retired

If you are not capable to continue rally, contact immediately tel +358 40 254 8897.

Written notice for retiring needs to be delivered to Special Stages start / finish / radio point or sweeper car. Notice for retiring is on the other side of the time card.

Cancelling Special Stage

If Special Stage needs to be cancelled due of accident or other forcing reason it can be used as a liaison or to use other alternative route according to road book moving to the next Special Stage. Rally organizer will give instruction which way is to be used.

WELLCOME to SM Mad-Croc Länsirannikko Rally!



COVID-19 INSTRUCTIONS

Preparing for Covid-19 situation

The event must not be attended as sick or experiencing symptoms of respiratory infection.

The competition event follows the instructions of the Finnish Institute for Health and Welfare (THL), the instructions and regulations of the Regional State Administrative Agency (AVI) and the local infectious disease authority in the prevention of infections. These and the instructions of the National Sports Association have been taken into account when planning the rules of the event.

It is recommended to use the Koronavilkku - application, <https://koronavilkku.fi/en/>.

During the event, the organizer will offer face masks as well as hand sanitizer at several different points. During the event using a face mask is required by officials as well as competitors and maintenance personnel. Safety distance of 2 m must be observed.

Toilets and dressing rooms

The service park area has toilets and hand washing facilities.
There are no dressing and shower rooms in the service park area.

Cafe and dining

There will be a catering area in the service park, safety intervals must be observed during queuing.
Good hand hygiene and the use of a face mask are required when shopping in the catering area.
Meals are recommended to take a takeaway and eat in your own team service area.
There is only a card payment in the catering.

Instruction when visiting the rally office

On Thursday 27th of May, pre-registration will take place at the premises of V-Wauhtipiste, Kuormakatu 4, 20380 Turku at 18:00 to 20:00. Only one person of driver's is allowed to enter the rally office. The use of a mask is required, as well as the observance of safety distances. Remember to take Driver's license or identity card with you.

On Friday 28th of May and Saturday 29th May, only one person of driver's is allowed to enter the rally office, Ahtonkaari 5, Lieto at 7.00. The use of a mask is required, as well as observance with safety distances. Remember to take Driver's license or identity card with you.



Hyötyautot



Scrutineering only two personnel per car. Use face mask and hand sanitizer.

During the race, the windows of the competitor's car are also closed at the time control stations.

If you need to visit the rally office in some other matters, please notice that only one person at time is allowed to enter.

Instructions for competitors and service personnel in the service park

Maximum size of the team is 6 persons, including the drivers. Everyone is required to wear a face mask.

Access to the service park is controlled. For entering the service park, it is required in advanced to provide a list of team members; name, home town and phone number. The wrist band, which is given with the competition materials, must the whole team be wearing on the wrist throughout the competition.

Each competitor has a 48 m2 (for the team championship drivers 100-200 m2 depending on the number of cars) team service area which includes safety distance.

Competitors and service personnel are required to remain at their own service area.

In case of coronavirus suspicion and accident

If a participant in the event has even a mild symptoms suitable for coronavirus infection, he or she will be instructed to perform a symptom assessment in the Omaolo service: [complete a symptom assessment at omaolo.fi](https://omaolo.fi)

Omaolo-service provides additional guidance on applying for the test, if necessary. The most up-to-date information on the coronavirus situation <https://thl.fi/en/web/infectious-diseases-and-vaccinations/what-s-new/coronavirus-covid-19-latest-updates>

The person's participation in the event ends and he or she is directed to voluntary quarantine. The event organizer has up-to-date lists of participants in the event. If necessary, the event organizer will provide the contact lists to the authority.

All actions requiring first aid are handled at emergency services TYKS Acute in Turku.

OTHERS THAN COMPETITORS AND NAMED TEAM MEMBERS ARE NOT ALLOWED TO ENTER THE SERVICE PARK AND RALLY HQ.





AT/TC0
AT/TC3F
AT/TC6D
AT/TC9D

AT/TC3C
AT/TC6C
AT/TC9C

Traileri parkki
Trailer park

AT/TC13B

EK13 Maali
SS13 Finish

Huoltoalue
Service area

VAK

AT/TC3D

Parc Fermé

AT/TC3E

Katsastus
Scrutineering

HUOLTOALUE
SERVICE AREA

HUOM! Nopeusrajoitus
koko alueella
NB! Speed limit within
the area



INSTRUCTIONS FOR INITIAL SCRUTINEERING AND SEALING

INITIAL SCRUTINEERING – WHAT WILL BE DIFFERENT NOW?

Because of the situation with Covid 19, the scrutineering must be done with special care and caution. Two main principles are:

1. We need to avoid moving objects from one person to another.
2. We need to create small groups from scrutineers and Team members and all closer contacts are permitted only inside these groups.

Because of this, please READ CAREFULLY these instructions and follow them! FORWARD THESE INSTRUCTIONS TO THOSE TEAM MEMBERS WHO WILL BRING THE CAR TO THE INITIAL SCRUTINEERING!

THE USE OF THE FACE MASK IS OBLIGATORY!!!

THE USE OF THE HAND DESINFECTION GEL IS STRONGLY RECOMMENDED WHEN EVER NEEDED!!!

THE GEL IS AVAILABLE IN SEVERAL PLACE OF THE SCRUTINEERING VENUE

REGISTRATION TO THE INITIAL SCRUTINEERING

Before the event:

Reserving an appointment from the "Slotti" appointment system

Go to <https://slotti.fi/booking/rallism/> and choose the correct language (the flag). After this choose the correct scrutineering line:

- **"BASIC SCRUTINEERING"** – This is for car with normally aspirated engine
- **"TURBO SCRUTINEERING"** – This is for cars **WITH** turbo but **WITHOUT** FIA Pop-Off valve
- **"CARS WITH FIA Pop-Off VALVE"** -This is for the cars which have the FIA Pop-Off valve in the engine

Choose the time for initial scrutineering which suits you best. You can choose whatever time from the correct line which is free. This reservation must be done according to the given timetable. If you have any doubt, contact Mr. Henrik Frank, +358 40 534 9977.

During the event:

Because of the Covid 19, the registration to the initial scrutineering and the checking of the car documents will be done electronically. **This need to be done by email latest 24 hours before your time for scrutineering.**

The following documents should be scanned or photographed and emailed to the address rallismkatsastus@gmail.com. THE HEADLINE OF YOUR EMAIL MUST INCLUDE THE COMPETITION NUMBER!

1. A certificate of the valid technical road inspection of the car
2. Registration document / Finnish transfer permit (red-white number stickers)
3. The first page of the ASN technical passport (the FIA technical passport is not valid in national events). If you don't have the ASN passport, it is also available from the AKK-Motorsport with the price of 26€ from https://my.surveypal.com/Katsastuskorttitilaus-2021_2. This site is in Finnish, ask assistance from Mr. Henrik Frank, mobile: +358 40 534 9977.
4. The first page of the FIA or national homologation form
5. The first page of the safety cage certificate (if not in the FIA homologation form)
6. The first page of the catalysator homologation certificate

Tyre barcode template may be send in this same email or alternatively LATEST UNTIL THE END OF SCRUTINEERING to the same email rallismkatsastus@gmail.com . THE HEADLINE OF YOUR EMAIL MUST INCLUDE THE COMPETITION NUMBER! Read the instructions for the tyres in the supplementary regulations.

Please note that there is a limit of the size of documents which you can send by email. Specially the photos are easily too big files. If you don't know how to minimize the size of the photo, please use the www.wetransfer.com service to send bigger documents. The email address is the same rallismkatsastus@gmail.com THE HEADLINE OF YOUR EMAIL MUST INCLUDE THE COMPETITION NUMBER!

ARRIVING TO THE SCRUTINEERING

As written before, there will not be any scrutineering office where to do the registration. The scrutineering will notify the entry to the scrutineering venue in correct time (latest 10 min before reserved time). Late arrival to the scrutineering venue will cause a penalty of 50€ which will be notified to the Team. The penalty fee must be paid to the rally office latest 1h30min before the start time of the competitor.

When you come to the scrutineering venue, please wait in your car until you will be asked to drive into the scrutineering hall. Please note that the correct line is marked on the door. If you will go out of your car, please remember to keep distance to others. **With the car must and is permitted to be the only following Team members:**

- **With the cars fitted with the FIA pop-off valve:** 1 person who will stay all the time with the car + one person who will remove and bring the pop-off valve to the test. **2 person's total.**

- **With all other cars only 1 person** is permitted to come in with the car to the scrutineering hall.

- **Additionally, with all competitors there must be one person who will bring all the driver's equipment to be checked.** The entry for the driver's equipment -inspection will be shown with visible signs from the scrutineering venue. **THE DRIVERS EQUIPMENT WILL BE CHECKED IN THE SCRUTINEERING HALL!**

INITIAL SCRUTINEERING, PREPARATIONS

The initial scrutineering template is already in the scrutineering. The Team doesn't need to take care of that.

It is important that the competition numbers and all obligatory advertisements are already now fitted to the car!

Please do also remember that the usage of the incar -camera needs a permission from the AKK- Motorsport as stated in the sporting regulations. **Inform the usage of the incar -camera latest on Wednesday on the rallyweek by email rallism@autourheilu.fi.**

All incar -cameras must be fitted in the car when entering to the initial scrutineering. If the same camera is used during the recce, then the photo of assembling is accepted.

SEALING

Only the turbo and the FIA pop-off valves will be sealed. No seals for engine or transmission. The spare parts (turbos and pop-off valves) will NOT be sealed during the initial scrutineering but on Friday morning at the service park area. Read the working hours from the info!

It is the responsibility of the competitor to fit the sealing wires and the seals as these instructions.

Sealing the turbo:

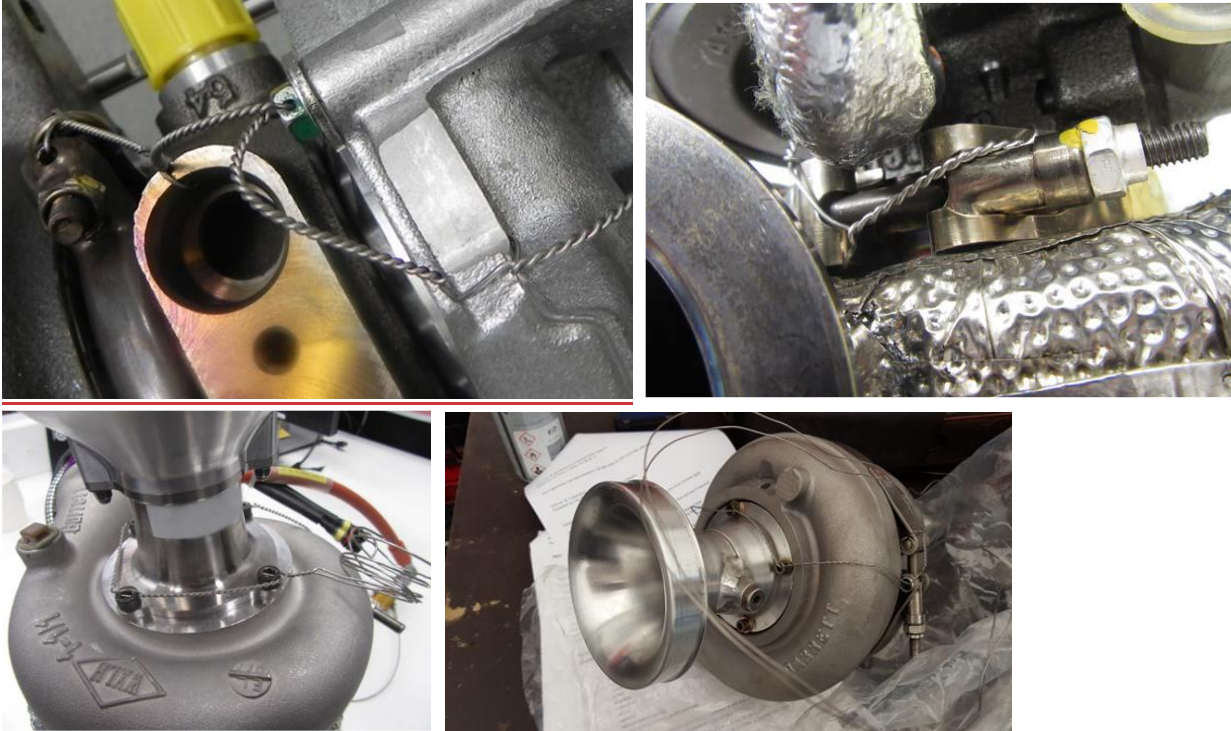
All supercharged cars must be fitted with a restrictor fixed to the compressor housing (with the exception for some R2 cars where the turbo will be sealed without restrictor). The mounting of the restrictor onto the turbocharger must be carried out in such a way that two screws must be entirely removed from the body of the compressor, or from the restrictor, in order to detach the restrictor from the compressor. Attachment by means of a needle screw is not authorised.

For the installation of this restrictor, it is permitted to remove material from the compressor housing, and to add it, for the sole purpose of attaching the restrictor onto the compressor housing. The heads of the screws must be pierced so that they can be sealed. The restrictor must be made from a single material and may be pierced solely for the purpose of mounting and sealing, which must be carried out between the mounting screws, between the restrictor (or the restrictor/compressor housing attachment), the compressor housing (or the housing/flange attachment) and the turbine housing (or the housing/flange attachment) (see drawing).

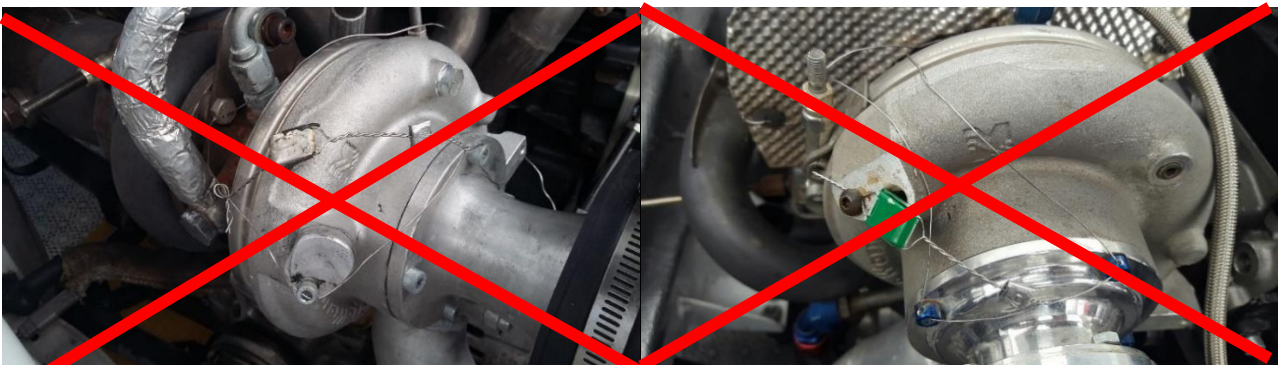
After the scrutineer has checked the correct fitting and size of restrictor and the sealing wire, the ASN Technical Delegate will give the number plate (tag) and two aluminium seals which the Competitor will fix

to the turbo according to these instructions. After this the scrutineer will close the aluminium seals with the sealing pliers. It is in Competitors responsibility to secure that this has been done correctly.

Examples of correct wiring for sealing. It is permitted to move the housings but not to remove without braking the sealing.



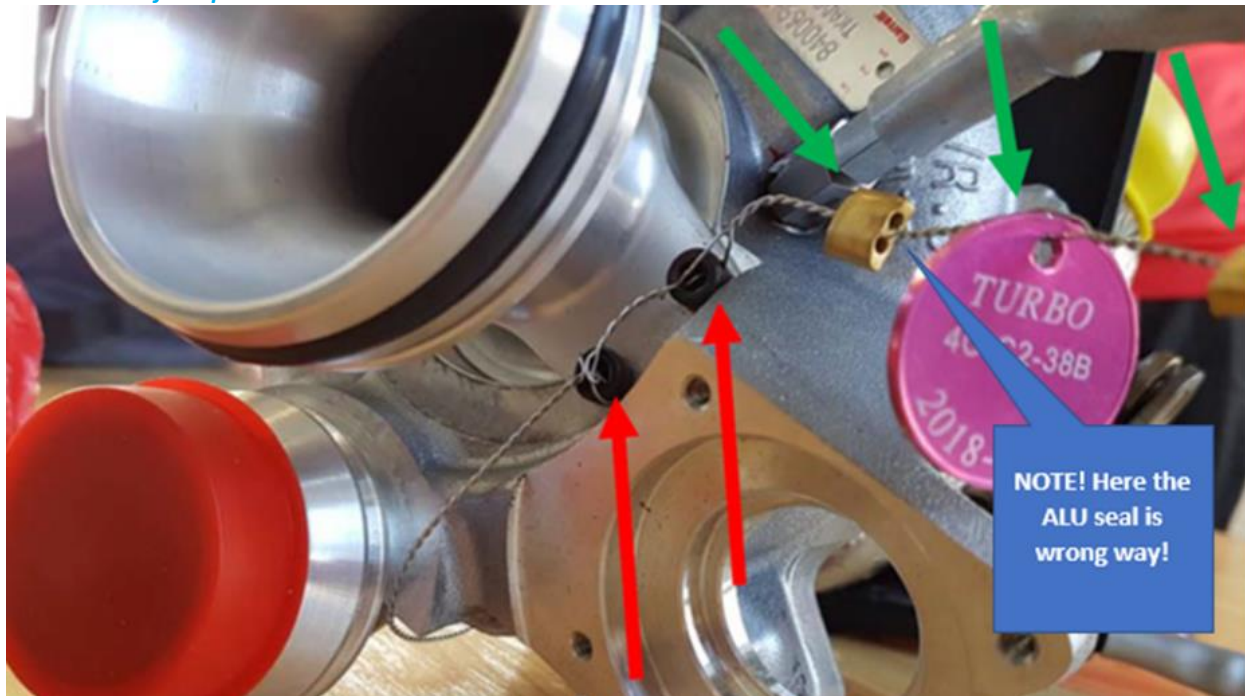
Examples of incorrect sealing wiring



Remember to fit the ALU seal so that the wire goes in thru the two holes of the seal and comes out from the one hole.



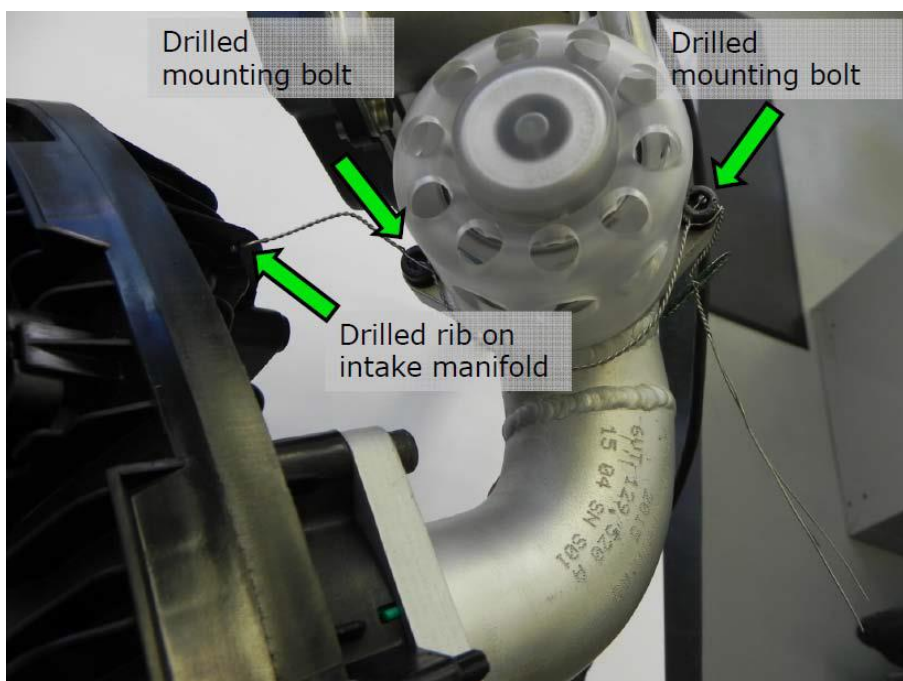
After minimum two restrictor fixing bolts fit the first ALU seal maximum 20mm after the last bolt. Then follow the instructions of the picture!



Sealing the FIA Pop-Off Valve:

Also the FIA Pop-Off valve must be sealed during the initial scrutineering.

After the FIA Pop-Off valve has passed the test, the valve may be fitted to the car under the control of the scrutineer. Also the insert must be fitted under the valve. After the fitting the sealing wire must be fitted which is locking the valve to the inlet manifold (see the picture). The scrutineer will ensure the wire with the seal.



The spare valves will be checked also during the scrutineering.

Procedure for the spare Pop-off valves: The scrutineering will check the valve. The passed valve will be placed into a seal bag. The number of the valve will be written to the spare part list of the competition. This means that each driver don't need to have own spare parts (registered to him) but any driver may use the sealed spare part from the spare part list. When needed, the Team must inform the scrutineering of the need to change the valve. The valve can be changed only under the supervision of the scrutineer and only in the service park. Also the intact seal bag must be shown to the scrutineer before taking the valve out of it.

There is no limitation for the number of valves used during the competition, but the reuse of the valve is forbidden during the competition.

IMPORTANT INFORMATION FOR THE INITIAL SCRUTINEERING

One Team member must always stay near their car. He must have available all the documents which have been sent to the scrutineering by email. These documents will be shown only by request.

Additionally is needed:

- One extra person for the cars fitted with FIA Pop-Off -valve who will take care of taking the valve for testing and fitting it to the car after testing.

- One extra person who will show the drivers equipment in separate scrutineering. This place will not be located in the scrutineering hall so driver's equipment should not be brought inside the hall with the car. See the signs outside and follow them!

This separate inspection room is equipped with several tables. When you see a free table, unpack the contents of the equipment bag on the table and show the equipment as requested. If there is no free table available, wait outside and keep distance. No queue is expected. After the inspection is passed the scrutineer will do the remarks to the driver's equipment template and will show it to the Team member.

When the initial scrutineering is done, the scrutineer will complete the template and will also mark the numbers of the seal and FIA Pop-Off valve (if any). It is clearly visible from the template if the car is passed or not passed.

It is obligatory that the Team member will take a photo of the completed initial scrutineering template!

The time for taking the photo will be marked to the template just before taking the photo. From now on, the Team member has 10 minutes to complain about the contents of the report, if he / she does not think it is in accordance with the course of the initial scrutineering.

If the car will not pass the scrutineering, the reason will be marked to the template. Specially the problems with the safety issues must always be discussed with the AKK Technical delegate before marking it to the template. If the defect or deficiency is significant, the defect must be ordered to be repaired before the rally. The technical delegate will discuss the extent of the repair with the Team member and determine the

time by which the car must be re-presented for scrutineering at the latest. If the location is not the scrutineering venue, it must be determined with the Team member (for example, if the repair is checked at the service park).

The Team members are reminded that one of the main tasks of the AKK Technical delegate is to ensure the legal rights of the competitor in technical matters. If the competitor's representative is unclear about the decision made by the scrutineer, it is recommended to contact the AKK Technical delegate, if the matter is not resolved in consultation with the scrutineers and the Chief scrutineer.

With regards

AKK Technical delegates

AKK-Motorsport ry, technical executive Iiro Palmi

GPS Safety Tracking Device - Installation

AKK-Motorsport is using the same GPS Safety Tracking system for the Finnish Rally Championship than in 2020.

The system requires some preparations in the rally cars. These are described below. Should you have any questions, we are happy to help.

With this current system we will have better communication facilities with the rally cars in case of any accidents, as well as a more secure communication channel between the cars and the rally control centre.

Charging Power

Each car must have a female USB power socket for 12V current. The socket must be within 50 cm of the planned installation location of the device. The connection may be part of the car's main circuit, so that when the main power is switched off it will not be discharging the battery e.g. in overnight parc fermé. You may use a basic USB socket, but it must give at least 2A of current. **Connection always to the holder (which has a 12V -> 5V converter), not the device!**

Installation in the Car

The device must be installed in the car with the equipment described in the following pictures. It is an absolute must that the device will be placed so that

- both the driver and the co-driver can reach the touch screen without opening safety belts
- both the driver and the co-driver can see the screen when driving on special stage

The RAM Mount 25 mm ball base can be borrowed or bought from the rally office. The price will be 10 Euros, either as a payment or as deposit which will be returned when the ball is returned after the rally.

Device



The tracking will be done with an application. There are no other applications in the device. Operation instructions will be given later.

The clamp mount seen in the picture does not exist, but the device will be installed with the RAM Mount ball.

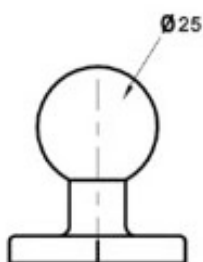
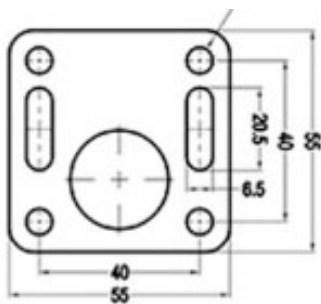
Installation Equipment



This ball mount must be attached to the car with solid screws, in a place as instructed above, in order for the drivers to be able to use the device.

The device is attached to the ball with the double socket arm.

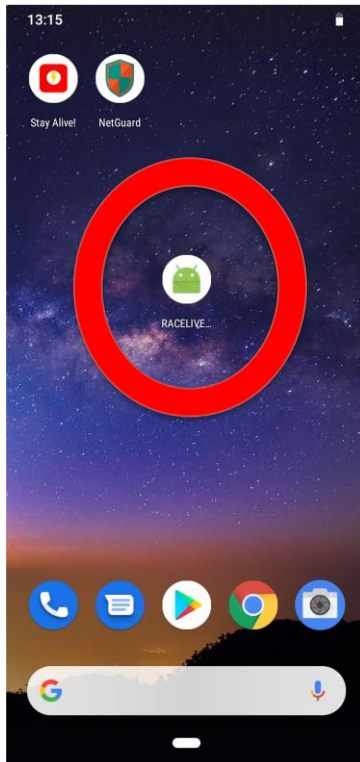
The installation measurements for the base of the ball can be seen here. Screw hole diameter is 6.5 mm and distance between the holes 40 mm.



GPS Safety Tracking - User's Manual

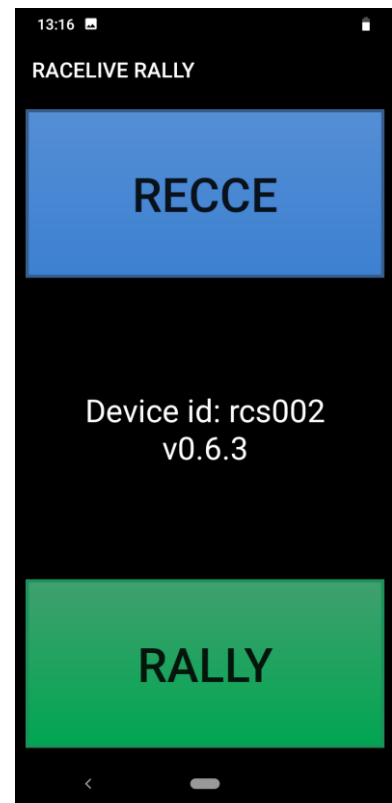
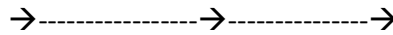
In FRC events all cars will be equipped with a GPS safety tracking device, run by AKK Sports with Trax-meet. Tracking is done using the equipment and the installed application. Below you can find the main features and operation instructions, installation instructions have been given separately.

Opening Screen



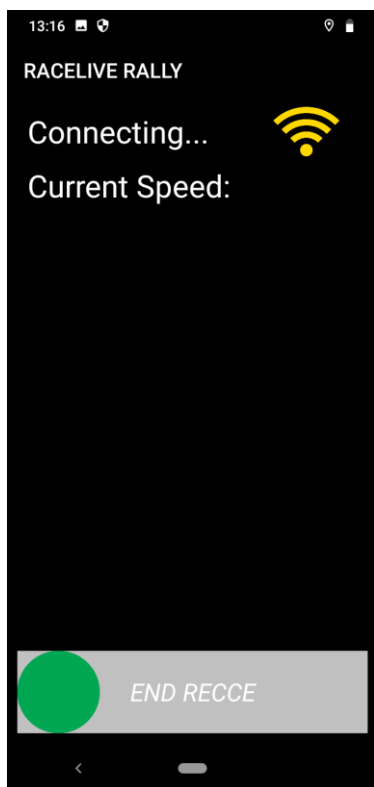
The device and tracking application is already open when you receive the device. Device **SHOULD NOT** be turned off during the rally.

Screen may be turned off by quickly touching the power button, and re-activated same way.



If you accidentally close the application and re-open it, you choose reconnaissance tracking (RECCE) or (RALLY) tracking.

Reconnaissance Tracking

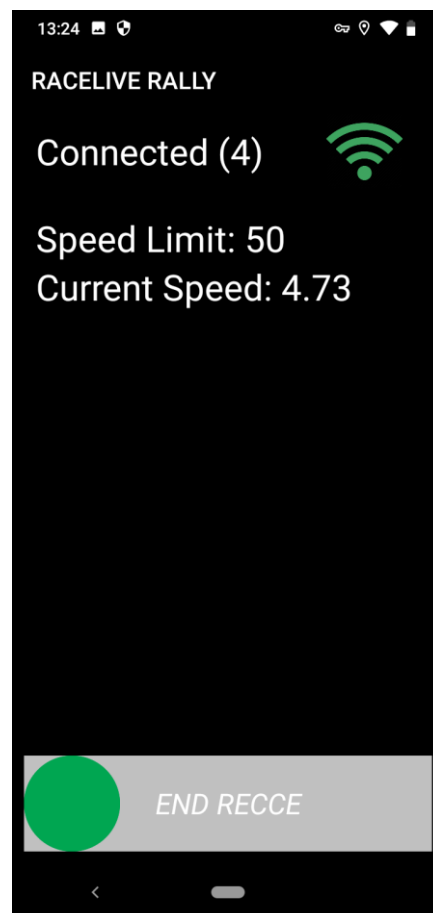


If you press **RECCE** on the start screen, the view pictured on the left will open, as the device is searching for connection.

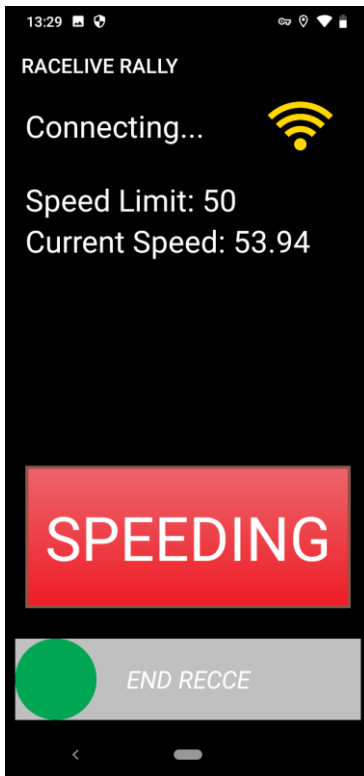
Once connected, the device will show a possible speed limit set by the organiser for a certain area (e.g. a special stage) and the your current speed.

All competitor movement within special stage areas will be registered in the application database and can be used afterwards to monitor speeds etc.

Once you finish reconnaissance, you can stop the tracking application by gliding the green dot at the bottom of the screen to the right.



Reconnaissance Tracking continued...

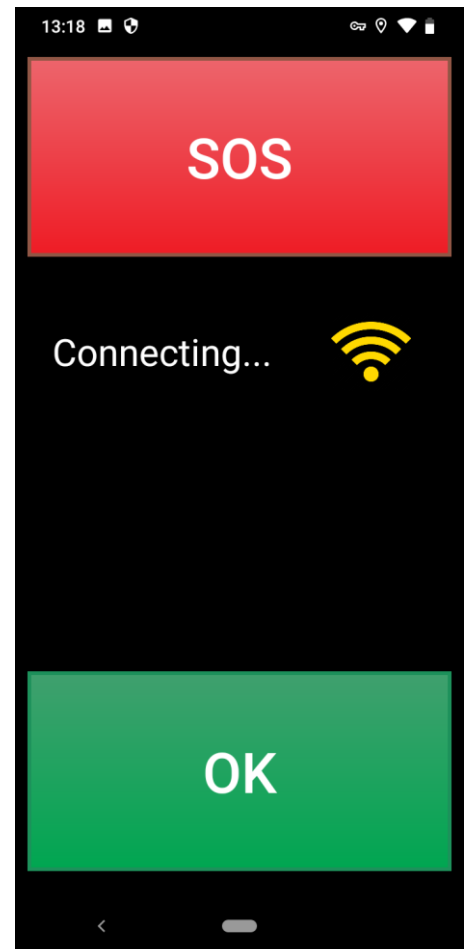


Should you go over the speed limit set by the organiser, the device will show this to the drivers (**SPEEDING**). The device will not show any speed limits set by the road authorities.

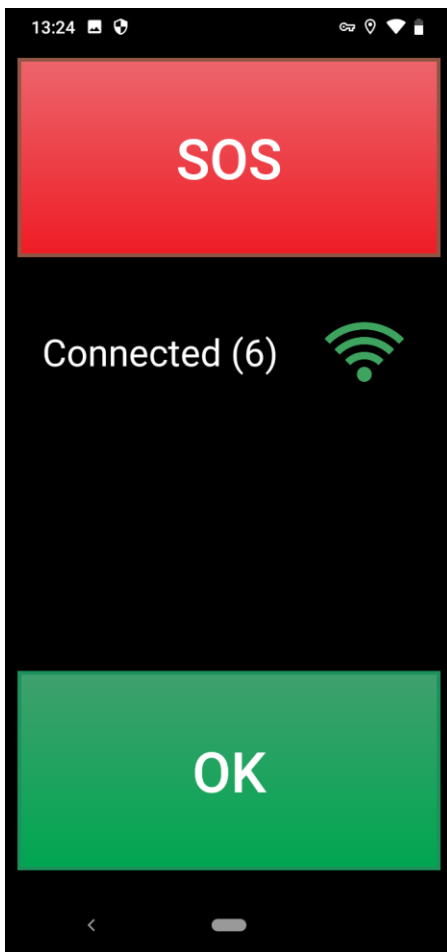
Any speeding will be stored in the application database.

Rally Tracking

When you have chosen **RALLY** tracking from the start screen, the view pictured on the right will open to the screen, as the device is searching for connection.



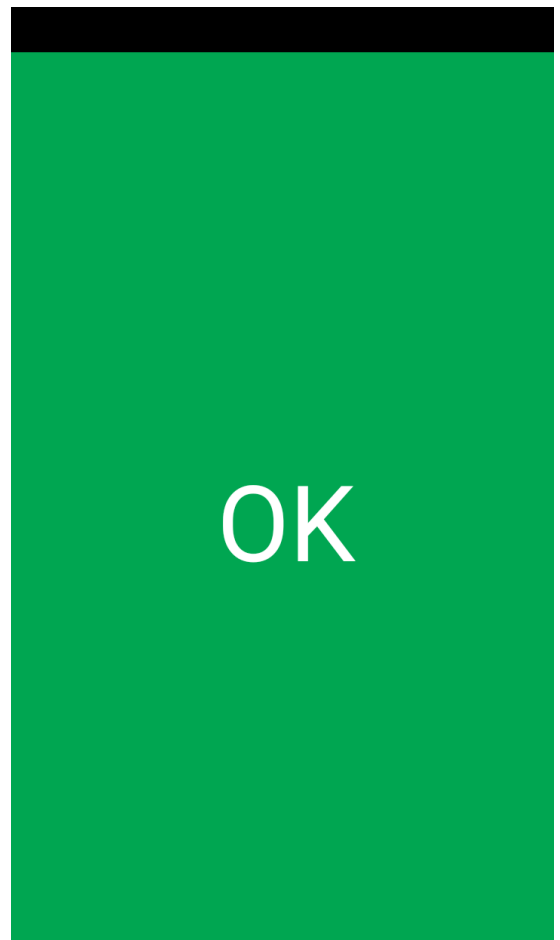
Rally Tracking continued...



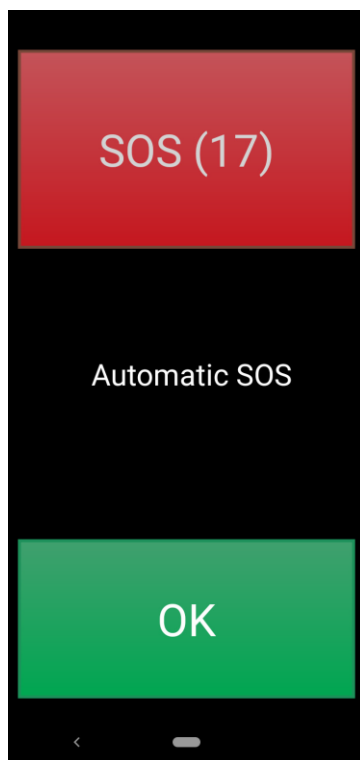
Once connected, the device will show the basic status with OK and SOS buttons, and the connection confirmation.

If you need to stop on stage to change a tyre or something, but there is no need for medical or fire assistance, not any danger to the surrounds, you must press OK on the basic status screen.

When OK is pressed, the screen goes green. It will automatically return to basic status after approx. 5 seconds after pressing the OK and the message having gone through to the system..



Accidents - SOS



If you stop during the rally e.g. to change a tyre, the device will automatically start an SOS alarm in about 20 seconds.

The time before the alarm is made can be seen on the SOS button (17 seconds remaining on the sample screen). It takes about 40 seconds from the moment of stopping to the time of sending the SOS.

You can dismiss the automatic SOS before it is sent by pressing OK. The Auto-SOS re-activates once the car is moving again at a minimum speed of 20 kph for at least 20 seconds. Unfortunately we are still in the middle of coding the system and this feature also works outside the stage areas, meaning there will be false alarms from refuels or TC queues.

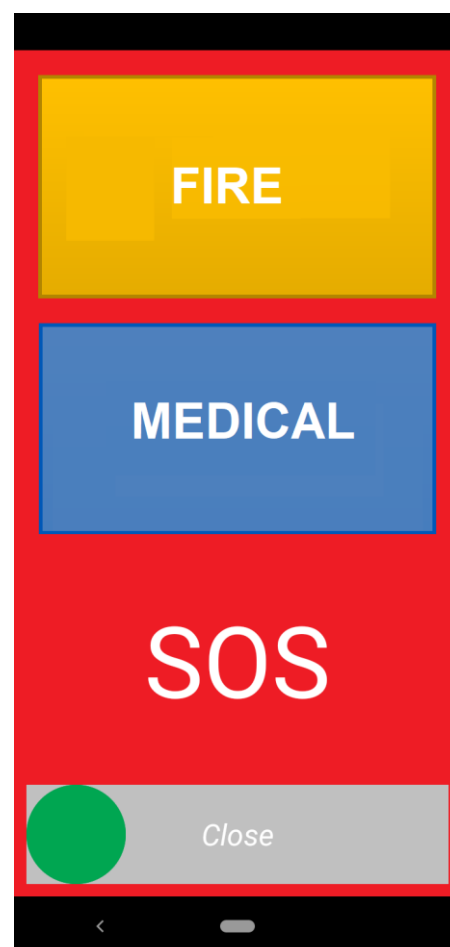
It will help the workload of the Rally Control significantly, if when stopping on a stage, you could press the OK before the alarm is sent off. Should the alarm be sent, the device will go back to basic status.

Should a competitor have an accident where help is needed, he needs to press the SOS button on the RALLY screen.

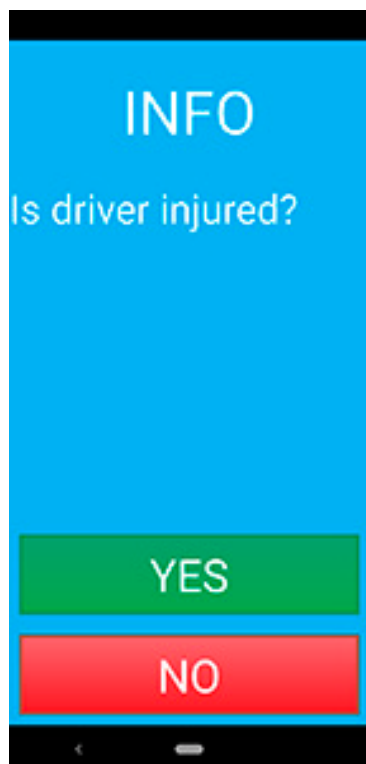
Pressing the SOS button will take the application to the mode seen on the right, with three options for the user:

1. Cancel the alarm by sliding the green dot to the right.
2. Confirm the alarm and ask for medical assistance by pressing MEDICAL.
3. Confirm the alarm and ask for extinguishing assistance by pressing FIRE.

After pressing FIRE/MEDICAL the button will flash for a while and the device will return to basic status.



Accidents - Communication



The Rally Control has an option to communicate with the car, e.g. to get more information on the seriousness of an accident, number of patients or their condition.

The screen will then show the INFO text, the question underneath and the answer options

YES

NO

The drivers must answer accordingly. There may be multiple questions following one after the other.

Accidents - Red Flag

The application is equipped with an option for the Rally Control to send a Red Flag notification and thus stop the stage for these cars, e.g. in case of accident, road block or other reason.

Should you receive a Red Flag on the screen, you must confirm its reception by pressing the OK at the bottom of the screen.

