



FUTURE

RAKENUS FUTURE OY



SM-RALLI

Meritapix

15.-16.8.2025



RALLY GUIDE



www.lahtihistoricrally.fi



1. GENERAL INFORMATION ABOUT THE COMPETITION

1.1. PROGRAM AND IMPORTANT DATES

The program can be found in the Rally Regulations, which can be found at Sportity mobile app. Password:

SM SMLAH2025 and HRT HRTLAH2025

1.2. RALLY HQ AND CONTACT INFORMATION

RALLY OFFICE		MEDIA CENTER	
Location	Sibeliustalo	Location	Sibeliustalo
Address	Ankkurikatu 7, 15140 LAHTI	Address	Ankkurikatu 7, 15140 LAHTI
Phone	+358 400 670 602	Phone	+358 44 330 8170
Email	enni.toivola@gmail.com	Email	sivuluisumeister@gmail.com
Person	Enni Toivola	Person	Jani Seppälä
Opening hours	Thursday 12:00–21:00 Friday 7:30–20:00 Saturday 06:00–20:00	Opening hours	Thursday 12:00–20:00 Friday 08:00–20:00 Saturday 08:00–22:00

Important phone numbers

General emergency number 112

Police 112

Wellbeing services county of Päijät-Häme Emergency care, Keskussairaalankatu 7, puh. 116 117

Towing services:

Lahden Hinauspalvelu T.Virtanen +358 10 739 0337

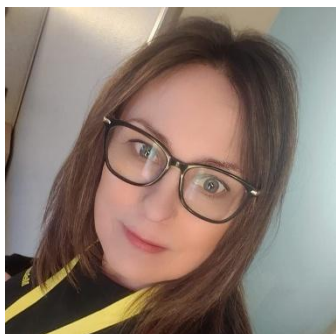
Redgo Hyvinkään hinausapu + 358 40 730 9555

1.3. THE VIRTUAL OFFICE NOTICE BOARD

The official virtual office notice board is available at Sportity app, password:

SM: SMLAH2025 and HRT: HRTLAH2025

1.4. COMPETITORS' RELATIONS OFFICERS (CRO)



Nina Suvanto
+358 40 761 0504
nina@suvantogroup.fi



Aulis Ahonen
+358 50 535 5100
aulis.ahonen@mikua.fi

Competitors' Relations Officers will be wearing a red vest with a text "CRO" on it. You can reach a CRO the best by phone.

CROs can be found at the following places:

- Documentation Checks
- Scrutineering
- The Start and Finish area
- Service park
- Regrouping areas

2. IMPORTANT INFORMATION BEFORE THE COMPETITION

2.1. ACCOMMODATION

You will find Information about accommodation on our website:
www.lahtihistorically.fi

2.2. SERVICE, TRAILER PARK AND PARK FOR RECONNAISSANCE CARS

The service park is located at Lahti Harbor, Satamakatu 5, 15140 Lahti

SM 14.8 klo 12.00–17.8. klo 12.00. Mr. Tapio Airitsalo, +358 50 328 1147

HRT 16.8. klo 6.00–24.00. Mr. Pekka Valkonen, +358 44 921 3997

The trailer park is located at Lahden Vanha ravirata, Hämeenlinnantie 35, 15800 Lahti

Opening hours: 12.8. klo 12.00–17.8. klo 12.00

Park for recce cars is located at

Pikku-Vesijärvenpuisto, Kariniemenkatu, 15140 Lahti

3. IMPORTANT DURING THE RALLY

3.1. COURSE OF THE RALLY

The ideal starting times for the competitors will be announced according to the program on the official virtual notice board of the rally at Sportity. The competitors will start from Lahti Harbor at one (1) minute intervals.

The competitor must follow the competition route determined by the organizer throughout the entire competition.

The finish of the competition is at Lahti Harbor. After the finish of the rally, the rally cars are directed in the order determined by the rally organizer to the finish area, where the prizes are given based on the provisional results.

3.2. IDENTIFICATION OF OFFICIALS

Officials can be identified as follows:

- SS Commander: Red vest
- SS Safety Commander: green vest
- Competitors' Relations Officer: Red vest
- Timekeeping, security officers, marshal, ticket sales: yellow vest
- Scrutineering: yellow vest

3.3. TIMECARD AND OPERATION AT TIME CONTROLS

International timecard is used in the rally. Timecard will be distributed to competitors along with other materials. The time for the next AT is calculated by adding the transition time to the actual start time of the SS. Each competitor pair is solely responsible for their timecard. At the time control station, the timecard is handed over to the official, who will make time entries on the timecards – not the competitors.

3.4. SPEEDING SANCTIONS

For speeding during reconnaissance, on the transit sections or in the service area during the competition measured by the police or the rally organizer's speed monitoring device, or switching off the GPS tracking device, the clerk of the course may impose a penalty in accordance with section 9.1 of the 2025 Finnish Rally Championship series rules.

3.5. SERVICE

Centralized service park is located at Lahti Harbor, Satamakatu 5, 15140 Lahti. Service is only allowed in the areas designated by the organizer.

There is a 20km/h speed limit in the service area.

In each car, there must be an oil-leak prevention kit which can be used to collect the oil-based liquid of the car's engine system. The set must include at least oil-absorbent, plastic bags and protective gloves. The organizer has also provided equipment in case of a bigger oil leak. A fire extinguisher (min. 6 kg) must always be available. Open fire is not allowed. Smoking is only allowed in marked spots. If a competitor or their crew breaks these rules, the judges can command sanctions, all the way to even disqualification.

Service area according to the Finnish Rally Championship series rules are booked for every competitor.

3.6. REFUELING

All classes refuel only at the petrol stations mentioned in the road book along the route

Matkakeidas Kausala, Sitikkalantie 5, 47400 Kausala

Matkakeidas Vierumäki, Tervalammentie 1, 19110 Vierumäki

Matkakeidas Hollola, Hopeakalliontie 2, 15880 Hollola

SEO Oitti, Mestarintie 3, 12100 Oitti

We recommend reviewing the refuelling options and areas (RZ) during reconnaissance. Refuelling is prohibited at service areas and transitions (except for refuelling areas (RZ) marked in the road books). Failing to obey these rules can lead to disqualification from the competition.

The car engine must be turned off and the crew must be outside the car during refuelling. The competitor is obliged to be ready to protect the ground with a protective cover impermeable to liquids. Two crew members can be used as assistants at refuelling areas. Anyone taking part to refuelling must be wearing appropriate fire-proof clothing that includes at least: long pants, a long-sleeved shirt, protective shoes, balaclava and gloves. The responsibility of refuelling is always on the competitor alone.

3.7. STOPPING DURING THE SPECIAL STAGE, WITHDRAWAL FROM THE COMPETITION, SOS & OK SIGNS

In case of an emergency (bodily injury etc.), show the SOS sign from inside the car to the fellow competitors so they understand to stop and help. When you see another competitor asking for help, you must stop to help. Failing to do so can lead to disqualification from the competition. Respectively, if you do not need medical help, show the OK sign to officials or fellow competitors.

Withdrawal

If a competitor withdraws from the competition, they must immediately notify the withdrawal number +358 40 466 4457.

Cars left to the special stage can be picked up only after the special stage in question is finished, unless the competition officials give a permission to do so.

3.8. GPS AND TIMING DEVICE RETURNS

All competitors must return the GPS tracking device and timing transponder to the finish TC. If a competitor withdraws, the devices must be returned immediately to the rally office or handed over to the personnel of the sweeper car. Failure to return or causing damage to the timing transponder will result in a €150 charge.

3.9. THE RALLY FINISH

The finish line is located at the Lahti Harbor (the same place as the start).

To get result, the competitor must arrive at the finish TC. The race cars are driven to the waiting area where the competitor officials arrange the cars.

All servicing is prohibited in this area. The drivers must stay near their cars before the prize giving ceremony. The prizes are distributed according to provisional results.

4. AFTER THE COMPETITION

4.1. RESULTS

Provisional results are published by class on the official electronic notice board (SPORTITY) and the final official results can be found on the Rally note board, in the KITI portal and at the websites www.ajaksi.fi and www.rallism.fi.

4.2. PRIZE GIVING CEREMONY

The number of awardees will be announced on the official notice board of the rally. Prizes are awarded to both drivers upon arrival at the finish, based on the provisional results. Prizes are souvenirs and merchandise. If there are changes in the official results regarding the awardees, the competitor is obliged to return the prizes.

Possible technical checks will take place:

Volvo Truck Center, Jatkokatu 1, 15230 Lahti