



7.2.2026

TUURI

HISTORIC RALLI

TUURI.FI / TUURIRALLI.FI



KILPAILIJAOHJE / RALLY GUIDE





Table of contents

1. General about the event
 - 1.1 Word from the Clerk of the Course
 - 1.2 Rally Guide
 - 1.3 Competitors' Relations Officers and their schedule
2. Before the Rally
 - 2.1 Trailer park
 - 2.2 Service Park
 - 2.3 Administrative check and collection of materials
 - 2.4 Reconnaissance
 - 2.5 Safety Scrutineering
3. During the Rally
 - 3.1 Identification of officials
 - 3.2 Time card and operations at TCs
 - 3.3 Refuelling distances
 - 3.4 Accident and Safety procedures
 - 3.5 Finish and prize-giving
 - 3.6 Technical check
4. After the Rally
 - 4.1 Cleaning the Service Park
 - 4.2 Dressing room and shower facilities
 - 4.3 After Party
5. Important phone numbers
6. Appendices
 - Appendix 1 Map on Rally HQ
 - Appendix 2 Itinerary
 - Appendix 3 Timecard example
 - Appendix 4 GPS tracking device installation instructions



1. General about the event

1.1 Greetings from the Clerk of the Course

Historic Rally Trophy event arrives in Tuuri, around Finland's biggest department store. The main organizer of the rally is Alavuden Urheilutoimikunta ry.

The rally office is located inside the food market building of the store, and the service park is situated in the yard area. Right next to the service park and rally HQ is a spectator special stage familiar from the Finnish Rally Championship in 2024. It will be driven on Saturday, with a length of approx. 1,80 km. Entry to the spectator stage is free of charge.

The rally will be held on Saturday 7.2., starting at 10:01 from the yard area of the store. You can expect interesting, demanding, and beautiful special stages.

Please note the expected congestion in the store area: traffic, the spectator stage, and regular customers will all affect moving in the area, please reserve time and patience.

Please follow the organizer's instructions on the route, special stages, and in the service park.

Work for this event has been ongoing for over a year. I would like to thank all motorsport enthusiasts, volunteers, partners, and neighbouring motorsport clubs for their contribution in making the Tuuri Historic Rally possible.

Saturday evening concludes with the Rally After Party at Hotel Alavus in the centre of Alavus, with music by Arttu Wiskari.

Finally, I wish everyone a safe and eventful rally weekend, and good and fair competition to all competitors.

Mikko Myllymäki

Tuuri Ralli 2026

Clerk of the Course

1.2 Rally Guide

Start by reading the Supplementary Regulations and the HRT regulations 2026, as well as the regulations of BMW Rally Series for class 33, regulations for VW Aircooled Rally Series for class 32, and HRRT regulations for class 25. These contain a lot of essential information. Matters already covered in those regulations are not repeated here; instead, this guide contains additional useful information and important phone numbers.

The rally office staff and Competitors' Relations Officers are happy to assist you. The Sportity app (password **TR2026**) will be updated with current information both before and during the rally.

1.3 Competitors' Relations Officers and their schedule



Tiina Lae

tel. +358505002989

tiina.lae@laeinvest.fi



Teemu Tikkaola

tel. +358405007492

teemu.tikkaola@gmail.com

Competitors' Relations Officers are available by phone and email throughout the entire event.

2. Before the Rally

2.1 Trailer park

The trailer park (Toivontie 3, 63610 Tuuri) is shown on the Rally HQ map in Appendix 1. Space at the rally HQ is limited, so please follow the instructions of traffic controllers and officials. Remember to remove reconnaissance car number stickers immediately after finishing recce.

2.2 Service Park

The service park location is shown in Appendix 1. Only rally cars and one service vehicle per crew are allowed inside. Refuelling from cans requires a non-permeable protective sheet under the fuel container.

2.3 Administrative check and collection of materials

Administrative check for classes 19–24, 42–47, and class 33 recce crews take place on Friday 6.2. starting at 09:00. For other classes it takes place on Saturday 7.2. starting at 08:00. Non-recce crews receive all materials at once.

Please return when arriving to the administrative check:

- contact form
- announcer information form
- licence number for transit plates

During administrative checks, competitor identity is verified and recce crews receive Material Package 1, containing:

- Road Book
- 2 Route Maps
- 2 reconnaissance car numbers (to be attached to the top centre of the windscreen and right rear side window)
- 2 competition numbers

On Saturday recce classes will only receive the tracking device.

NOTE: Timing and tracking are provided by Traxmeet. Their device requires a 1” mounting base, available e.g. from IKH (<https://www.ikh.fi/fi/traktoreiden-ja-tyokoneiden-tarvikkeet/ohjaamotarvikkeet/ohjaamon-lisalaitteet/puhelintelineet>). The mounting “ball” can also be purchased from the organiser for 10 €. The same mount is used in the Finnish Championship rallies and F-Cup. Full instructions are available in Kiti and Sportity.

A one-event rally licence (33 €) can be purchased at administrative check.

2.4 Reconnaissance (classes 19-24, 42-47 and those in class 33 doing reconnaissance)

Reconnaissance takes place on Friday 6.2.2026 from 09:30 to 19:00.

NOTE: Recce time for SS3 is 17:00–19:00.

The maximum speed during reconnaissance is 80 km/h, unless lower limits are indicated by traffic signs or signs placed by the organizer. Driving behaviour and speed may be monitored by both Police and the organizer. Two provided reconnaissance numbers must be attached to the reconnaissance car and clearly visible throughout reconnaissance. Driving against the direction of the special stage is strictly prohibited. Be aware that public traffic may use the same roads and may approach from the opposite direction. Also note that SS3 includes partially frozen asphalt.

2.5 Safety Scrutineering

Safety scrutineering is carried out at RaSe Park, Telekuja 7, Alavus. Scrutineering starts at 08:30 for the regularity class, and at 09:00 for all other classes.

NOTE: Only road homologated tires are allowed for scrutineering.

3. During the Rally

3.1 Identification of officials

Head officials and other officials can be identified from the following:

- SS Commander: red tabard
- SS Safety Officer: green tabard
- Competitors' Relations Officer: ID card
- Timekeeping, marshals, officials, ticket sales: yellow tabard
- Scrutineering: yellow/orange tabard

3.2 Time card and operations at TCs

The rally uses a national time card. Each crew is solely responsible for their time card, including presenting it at the correct moment and ensuring the accuracy of their own entries. An example time card is shown in Appendix 3.

Time cards are provided at the start TC.

At TCs, officials do not handle the time card; the crew writes down the time shown by the official.

Arrival Control (TC IN)

1. The presentation time is when the co-driver lifts the time card to the side window.
2. The official shows the arrival time and gives the provisional start time. A thumb-up confirms receipt of times.

SS START:

1. The start marshal shows the actual start time. Confirm with a thumb-up.
2. Start signal is given by light system (on every full minute). If lights fail, start is shown by flag.

False starts are detected by photocell or by start marshal and reported to competitor at SS finish.

STOP:

1. STOP shows the finish time of the special stage. Record it and confirm receipt.

The tracking device is issued with competition numbers from the office and must be installed before scrutineering.

After SS3 there is no time control; the time card shows the target time to SS4 (TC 4A), including 20 minutes of service time.

SERVICE IN

TC 5C gives the time for Service OUT (TC 5D).

PLEASE NOTE! Alternatively a QR code can also be used, requiring a mobile application RCQR to be downloaded. Available both for Android and Apple mobile devices. More information <https://www.raceconsulting.se/rcqr-instruktioner/>

3.3 Refuelling distances

	TOTAL	LIAISON	SS
START – REFUEL	52,79 km	31,51 km	21,28 km
REFUEL - REFUEL	70,87 km	41,94 km	28,93 km
REFUEL - FINISH	67,50 km	40,30 km	27,20 km
	191,16 km	113,75 km	77,41 km

3.4 Accident and Safety procedures

If you must stop on a special stage due to an off road or any other reason, you must place a warning triangle at least **50 m** before the stopping point.

SOS&OK

If you need assistance due to injury, fire, etc., use the **SOS** button on the tracking device and clearly display the **SOS sign** to approaching competitors. Do not leave the sign unattended.

If you see another competitor displaying an **SOS** sign, you must stop and provide assistance. If needed, call for help using the tracking device or the **SOS/safety number +358 46 682 2551**. If you cannot reach help, report the information to the next radio point or the finish of the stage.

When calling for help, report:

- Competition number of the crashed car
- Number of injured persons
- Severity of injuries
- Whether anyone is trapped in or under the car
- Exact location (road book reference/intersection/other info)
- Any other relevant details (fire, water, etc.)

Ensure rescue vehicles have unobstructed access by moving rally cars past the accident site. If impossible, cars must be moved to the roadside (digging space if necessary).

If you retire, inform Rally HQ at +358 46 847 8499 and return the GPS tracker as soon as possible to the nearest control, sweeper car, or rally office.

If no medical assistance is needed, show the green OK sign to competitors and officials.

3.5 Finish and prize-giving

The finish is located at the Rally HQ. From the finish TC, all crews are directed to the finish arch, where prizes are awarded.

3.6 Technical check

Any post-event technical checks will be carried out at Autoklinikka Jii & Jii Oy, Piirantie 22, Alavus.

4. After the Rally

4.1 Cleaning the Service Park

After the rally, please ensure your service area is left clean. There are plenty of bins available, including separate ones for bottles and cans.

4.2 Dressing room and shower facilities

Shower facilities for competitors are available at Hotel Onnentähti on Saturday from 10:00 to 21:00. Ask instructions from the hotel reception.

4.3 After Party

The post-rally gathering and lively after party will be held at Hotel Alavus, Järviluomantie 4, Alavus, with artist Arttu Wiskari performing.

5. Important phone numbers

CLERK OF THE COURSE

Mikko Myllymäki +358 407 707 437

ROUTE MANAGER

Jari Valtaala +358 400 765 952

CHIEF SAFETY OFFICER

Teemu Puro +358 400 231 840

RALLY OFFICE

Johanna Kivimäki +358 405 073 601

Hanna Onnela +358 408 309 887

SERVICE AREA

Markku Petäinen +358 405 072 575

EMERGENCY NUMBER 112

TYRE SERVICES

Alavuden Kumi Oy +358 6512 0147

TOWING SERVICES

Hinaus ja Tuuppaus +358 407 157 700

Mariant Oy +358 400 654 007

ACCOMMODATION

Hotelli Onnentähti +358 107 707 001, - [Online-varaus](#)

Hotelli Alavus +358 107 707 003, - [Online-varaus](#)

JML Rally Parc Fermé +358 405 122 252, [Majoituspalvelut ja kokoustilat – JM-Rally Parc Fermé – Latvala Motorsport Oy](#)

Sepänniemen Lomakylä +358 400 900 173, [Varaa — Sepänniemen lomakylä](#)

Maatilamatkailu Heikin Tupa +358 400 861 176, [Maatilamatkailu Heikin Tupa](#)

[Ähtäri Camping - Camping](#)

Valkeisen Loma, [Majoitus - Valkeisen Loma](#)

Hyvölän Talo, [Ähtäri sydämessä - Hyvölä](#)

Naava Resort Oy +358 405 608 455, [Ähtäri majoitus, huvilat ja huoneistot palveluiden äärellä | Naava Resort](#)

[Majoitus | Kuortaneen urheiluopisto](#)

FOOD

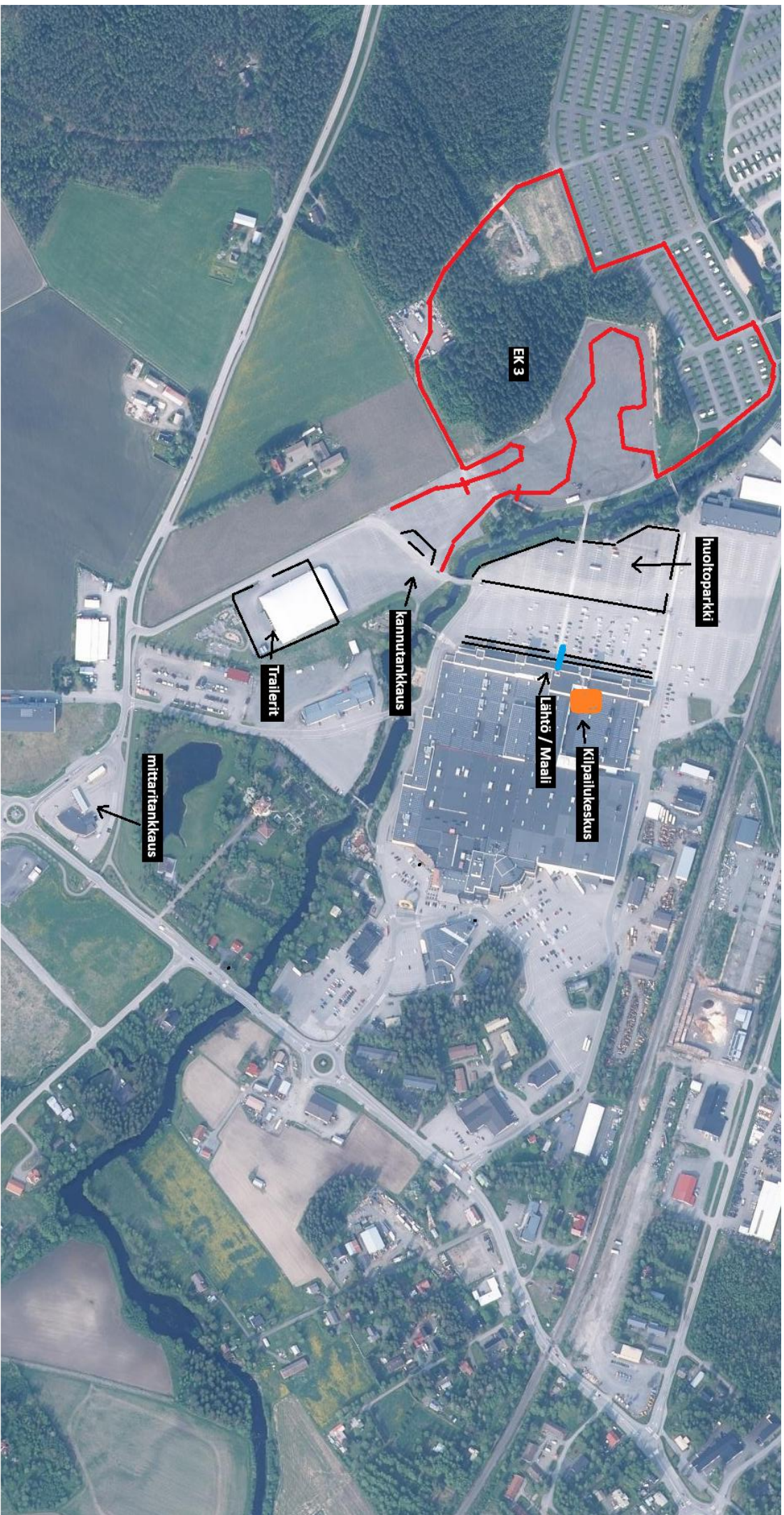
Tuuri:

- Onnenliekki liikenneasema, Aspinmäentie 14
- Ravintola Onnenkivi, Onnentie 7
- Kotipizza Tuuri
- Tuurin Grilli

Alavus:

- ABC
- Nordic pizza
- Milano's Kebab Pizzeria
- Kyoto sushi
- Ravintola Wagner

WELCOME TO TUURI!



AIKATAULU/SCHEDULE

PERJANTAI / FRIDAY 6.2.2026

9:00 kilpailutoimisto avataan / Rally Office opens

9:00 paperitarkastus ja ennakkotutustumismateriaalin jako alkaa / Administrative check and collection of reconnaissance materials start

9:00 huoltoalue avautuu / Service Park opens

9:30 ennakkotutustuminen alkaa, EK 3 klo 17:00/19:00 /Reconnaissance starts, reconnaissance for SS3 from 17:00 to19:00

19:00 ennakkotutustuminen loppuu /Reconnaissance ends

LAUANTAI / SATURDAY 7.2.2026

8:00 kilpailutoimisto avataan / Rally Office opens

8:00 paperitarkastus ja materiaalin jako alkaa / Administrative check and collection of materials start

8:30 turvallisuustarkastus tasanopeusluokalle alkaa /Pre-event Safety Scrutineering starts for Regularity class

9:00 turvallisuustarkastus muille luokille alkaa / Pre-event Safety Scrutineering starting for other classes

numeroof/competitors 1-25, klo 9-9.30

numeroof/competitors 26-50, klo 9.30-10

numeroof/competitors 51-75, klo 10-10.30

numeroof/competitors 76-100, klo 10.30-11

numeroof/competitors 101-313, klo 11-

9:30 kilpailuun hyväksytyjen listan julkaisu alkaa, listaa täydennetään turvallisuusajataulun puitteissa/
Publication of Start List, and the list will be supplemented within the Scrutineering schedule

10:01 Kilpailun lähtö, tasanopeus nro 401 / Start of the Rally, Regularity nro 401

11:01 Kilpailun lähtö, nro 1 / Start of the Rally, nro 1

TUURI HISTORIC RALLI 7.2.2026

AIKAKORTTI
TIMECARD

LÄHTÖ/START

TUNNIT	MINUUTIT	SEKUNNIT	1/10
--------	----------	----------	------

TODELLINEN LÄHTÖAIKA/ACTUAL START

LÄHTÖ/START - AT/TC 1A

15,81 km

AJOAIKA	29
---------	----

1	EK/SS 1	TULOAIKA				
		IHANNEAIKA/PROVISIONAL				
	max aika/time 10 min.	LÄHTÖAIKA/ACTUAL				
	5,78 km	MAALIAIKA/FINISH				

AT/TC 1B -AT/TC 2A

4,93 km

AJOAIKA	13
---------	----

2	EK/SS 2	TULOAIKA				
		IHANNEAIKA/PROVISIONAL				
	max aika/time 23 min.	LÄHTÖAIKA/ACTUAL				
	13,7 km	MAALIAIKA				

AT/TC 2B -AT/TC 3A

11,95 km

AJOAIKA	22
---------	----

3	EK/SS 3	TULOAIKA				
		IHANNEAIKA/PROVISIONAL				
	max aika/time 3 min.	LÄHTÖAIKA/ACTUAL				
	1,81 km	MAALIAIKA				

AT/TC 3B -AT/TC 4A

22,24 km

AJOAIKA	58
---------	----

4	EK/SS 4	TULOAIKA				
		IHANNEAIKA/PROVISIONAL				
	max aika/time 25 min.	LÄHTÖAIKA/ACTUAL				
	14,86 km	MAALIAIKA				

AT/TC 4B -AT/TC 5A

8,00 km

AJOAIKA	17
---------	----

5	EK/SS 5	TULOAIKA				
		IHANNEAIKA/PROVISIONAL				
	max aika/time 23 min.	LÄHTÖAIKA/ACTUAL				
	14,07 km	MAALIAIKA				

AT/TC 5B- AT/TC 5C

13,81 km

AJOAIKA	26
---------	----

SERVICE IN

--	--

60-30 MIN.

SERVICE OUT

--	--

AT/TC 5D -AT/TC 6A

24,53 km

AJOAIKA	39
---------	----

6	EK/SS 6	TULOAIKA				
		IHANNEAIKA/PROVISIONAL				
	max aika/time 25 min.	LÄHTÖAIKA/ACTUAL				
	14,96 km	MAALIAIKA				

AT/TC 6B -AT/TC 7A

7,31 km

AJOAIKA	18
---------	----

7	EK/SS 7	TULOAIKA				
		IHANNEAIKA/PROVISIONAL				
	max aika/time 20 min.	LÄHTÖAIKA/ACTUAL				
	12,24 km	MAALIAIKA				

AT/TC 7B -MAALI/FINISH

8,35 km

AJOAIKA	17
---------	----

TULOAIKA	
----------	--

ENNAKKOVAPAA

GPS Safety Tracking Device - Installation

We are using an app in GSM phone for safety tracking in rally events. System requires some preparations in the rally cars before rally starts. These are described below. Should you have any questions, we are happy to help. With the system we will have better communication facilities between rally control centre and the rally cars in case of any accidents, as well as a more secure communication channel between the cars and the rally control centre.

Charging Power

App works only if GSM display is on. This uses GSM battery alot, so it's mandatory to provide charging for the phone and the outer antenna (outer antenna is not needed in RECCE). There are 3 options for this:

- 1) Car must have 2 female USB type-A power socket for 5V current. The socket must be within 80 cm of the planned installation location of the device (see requirements of the installation location below). The connection may be part of the car's main circuit, so that when the main power is switched off it will not be discharging the battery e.g. in overnight parc fermé.
- 2) It is also possible to use power bank to provide the charging. Power bank minimum capacity must be 20 000mAh, it need 2 female USB type_A power sockets (1 for the phone and 1 for the outer GPS antenna) and it has to be fully charged when rally starts.
- 3) Female car cigarette lighter charger with 12V output. There is power divider for phone and outer

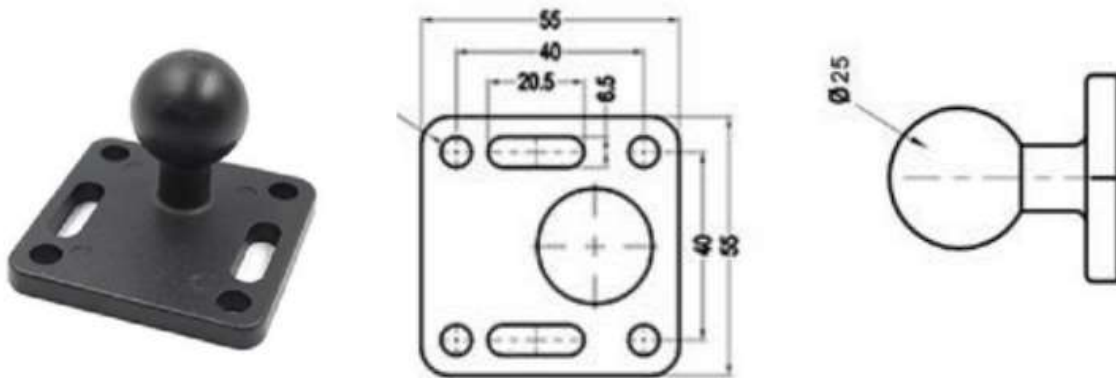


GPS antenna in the provided system.

Attaching the device to the car

The device must be installed in the car with the equipment described in the following pictures. It is an absolute must that the device will be place so that:

- **both the driver and the co-driver can reach the touch screen without opening safety belts**
- **both the driver and the co-driver can see the screen when driving on special stage**



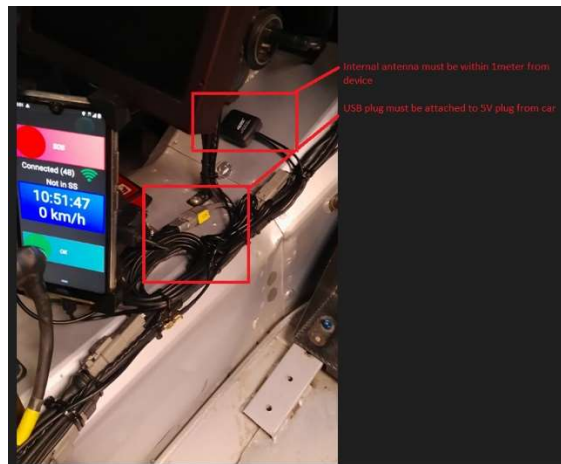
The device will be installed with 1" ball. This ball mount must be attached to the car with solid screws, in a place as instructed above, in order for the drivers to be able to use the device. The installation measurements for the base of the ball can be seen here. Screw hole diameter is 6.5 mm and distance between the holes 40 mm. If installed to the front panel of the car add support plate on the back side of the panel to avoid screws coming through the panel in case of accident and letting the holder fly freely in the car.

The GSM holder and phone is attached to the ball with the double socket arm. This allows you to orient the device so that it is easy to see by drivers.



GPS antenna must be installed as follows:

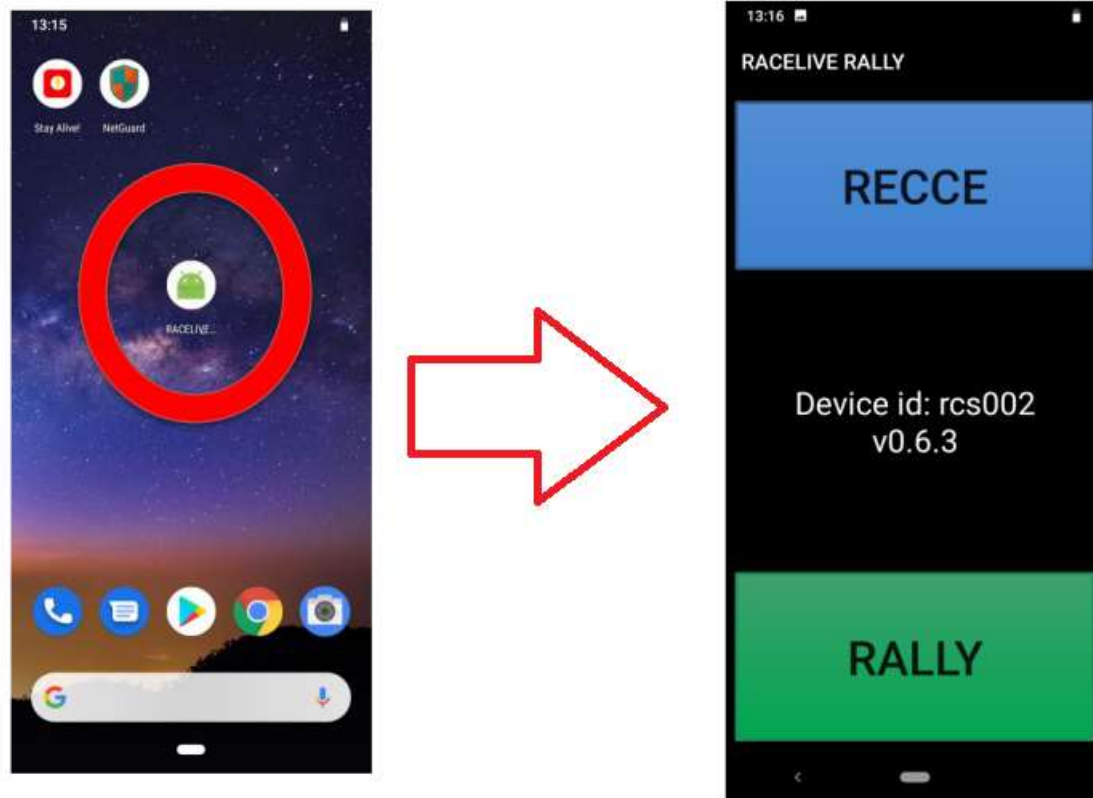
- GPS antenna is attached to the roof of the car or inside the back window phasing to the sky. In case installed to the roof antenna cable IS NOT ALLOWED to go to the roof via door or window frame, it has to go to the roof through the roof.
- Internally there is USB plug that needs to be plugged to 5V plug for the antenna to work.
- The internal antenna must be placed within 1 meter from the actual device. There is no pairing, ... to be done it works just as it is. Internal antenna must be minimum of 2 meters apart from the outer GPS antenna to avoid interference.



GPS Safety Tracking - User's Manual

All cars will be equipped with a GPS safety tracking device, run by XXXXXXXX with Traxmeet. Tracking is done using the equipment and the installed application. Below you can find the main features and operation instructions, installation instructions have been given separately.

Opening Screen When the device opens. In case RaceLive application is not automatically started start the RaceLive application from the icon circled with red in the picture.

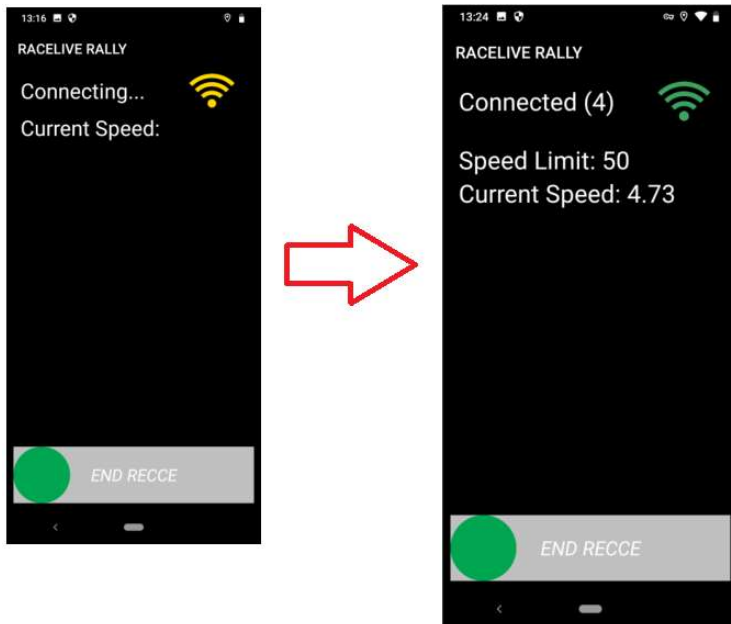


When the application opens, you choose reconnaissance tracking (RECCE) or (RALLY) tracking. If you do not make the choice, rally head quarters will automatically open correct view from their control panel.

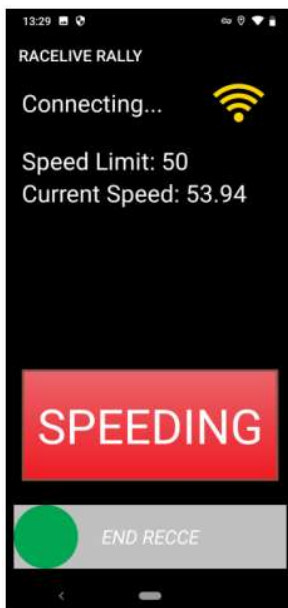
Reconnaissance Tracking

If you press RECCE on the start screen, the view pictured on the left will open, as the device is searching for connection. Please place the device so, that the screen is visible and possible received message could be seen easily. Keep the screen always ON! Keep the device all the time at charger, so that it won't run out of battery during the event!

Once connected, the device will show a possible speed limit set by the organizer for a certain area (e.g. a special stage) and your current speed. All competitor movement within special stage areas will be registered in the application database and can be used afterwards to monitor speeds etc..



Should you go over the speed limit set by the organizer, the device will show this to the drivers (SPEEDING). The device will not show any speed limits set by the road authorities. Any speeding will be stored in the application and system database.

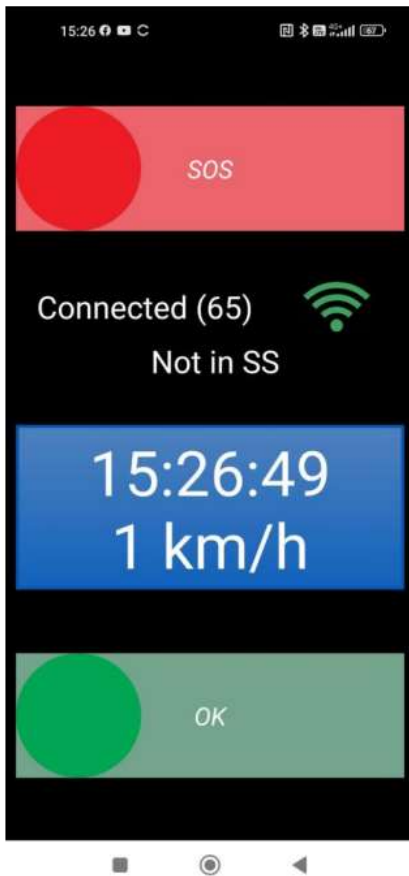


Once you finish reconnaissance, you can stop the tracking application by gliding the green dot at the bottom of the screen to the right. Close the screen during the night, or when finishing reconnaissance to spare battery.

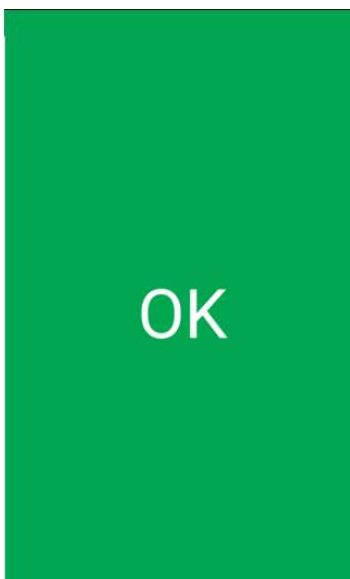
Rally Tracking

When you have chosen RALLY tracking from the start screen, the view pictured on the right will open to the screen, as the device is searching for connection.

Once connected, the device will show the basic status with OK and SOS buttons, and the connection confirmation.

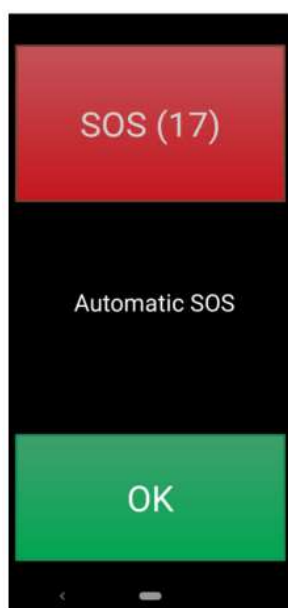


If you need to stop on stage to change a tyre or something, but there is no need for medical or fire assistance, not any danger to the surrounds, you must press OK on the basic status screen. When OK is pressed, the screen goes green. It will automatically return to basic status after approx. 5 seconds after pressing the OK and the message having gone through to the system.



AUTOT SOS Warning

If you stop during the rally e.g. to change a tyre, the device will automatically start an SOS alarm in about 20 seconds. This option won't be active at road sections! The time before the alarm is made can be seen on the SOS button (17 seconds remaining on the sample screen). It takes about 40 seconds from the moment of stopping to the time of sending the SOS. You can dismiss the automatic SOS before it is sent by pressing OK. The Auto-SOS re-activates once the car is moving again at a minimum speed of 60 kph at the special stage. It will help the workload of the Rally Control significantly, if when stopping on a stage, you could press the OK before the alarm is sent off. Should the alarm be sent, the device will go back to basic status.



Should the alarm be sent, the device will go back to basic status. Should a competitor have an accident where help is needed, he needs to press the SOS button on the RALLY screen. Pressing the SOS button will take the application to the mode seen on the right, with three options for the user: 1. Confirm the alarm and ask for extinguishing assistance by pressing FIRE. 3. Confirm the alarm and ask for medical assistance by pressing MEDICAL. 3. Cancel the alarm by sliding the green dot to the right. After pressing FIRE/MEDICAL the button will flash for a while and the device will return to basic status.

Accidents – Communication

The Rally Control has an option to communicate with the car, e.g. to get more information on the seriousness of an accident, number of patients or their condition. The screen will then show the INFO text, the question underneath and the answer options YES & NO . The drivers must answer accordingly. There may be multiple questions following one after the other.



Accidents - Red Flag

The application is equipped with an option for the Rally Control to send a Red Flag notification and thus stop the stage for these cars, e.g. in case of accident, road block or other reason. Should you receive a Red Flag on the screen, you must confirm its reception by pressing the OK at the bottom of the screen. NOTE! Red Flag will remain in the screen even after pushing the OK button. Application will go back to Race view only once Rally Control takes the Red Flag off.



Slow Car Ahead Warning

In case system has detected stopped or slow (below 20km/h speed) car in front of an other car and distance is less than 300m then application will show warning message. Note that this is based on speed and location data sent to sever in SS. It is possible that due to poor data connection data is not updated and some warning will not come through or warning comes even though car has already moved away. Warning shows distance to slow car in red as shown below.

