

# SM IMATRA RALLI

# 22.-23.5.2026

## COMPETITORS HANDBOOK



V.M.K.Oy

IMATRA

PEERA  
HOTELS & COTTAGES  
IMATRA  
Valtionhotelli

IMATRAN  
RUOSTEENESTO OY

IMATRAN  
OJY JA RENGASPISTE

SORA  
SALONEN OY

KUUSAKOSKI  
RECYCLING

AKB RALLI SM

Plus Katsastus



Hyötyvästet

COREGO





# RALLIS M



SM IMATRA RALLI 22.-23.5.2026





# RALLI SM



**SM IMATRA RALLI 22.-23.5.2026**

## **Table of Contents**

1. General about the event
  - 1.1. Word from the Clerk of the Course
  - 1.2. Rally week programme
  - 1.3. Rally Guide
  - 1.4. Competitors' relations officers and their schedule
  - 1.5. Ticket sales
  
2. Before the Rally
  - 2.1. Trailer park and recce car park
  - 2.2. Service Park
    - 2.2.1 Electricity in the Service Park
  - 2.3. Administrative check and collection of materials
  - 2.4. Reconnaissance
  - 2.5. Safety Scrutineering
  - 2.6. Competitors' changing facilities
  - 2.7. Food and beverage services
  
3. During the Rally
  - 3.1. Identification of officials
  - 3.2. Time card and operations at TCs
  - 3.3. Accident procedures
  - 3.4. Refuelling
  - 3.5. Finish and prize-giving
  - 3.6. Technical check
  
4. After the Rally
  - 4.1. Cleaning the Service Park

Appendices	Service Park map
	Driving instructions for scrutineering
	Start and Finish



# RALLI SM



## SM IMATRA RALLI 22.-23.5.2026

Itinerary  
Time card

# 1. General about the event

## 1.1 Word from the Clerk of the Course

Dear spectators, competitors and other guests of the SM Imatra Rally

The winter season is behind us, and we can finally begin the long-awaited summer season. We are honoured to host the opening round of the Finnish Championship series, and what an event it will be: eight Special Stages of top-level national rallying in the stunning landscapes of South Karelia, for the first time in decades!

The organiser's workload has been extensive. Of course, the F-Cup events held over the past two years have refreshed the memories of volunteers at Imatran Urheiluautoilijat regarding the challenges and requirements of organising a rally, so we are not stepping into a top-level national event completely from scratch. Still, the amount of work always surprises. Fortunately, the cheerful Karelian spirit keeps us going, ensuring that you, our valued competitors and spectators, can arrive with ease and enjoy everything the rally day has to offer. And there is plenty to enjoy!

We would like to remind everyone to behave responsibly and safely throughout the event, both on the Special Stages and in the Service Park. You will be guided and instructed, and for a good reason. Rally organisers receive their instructions from the authorities, and by following the rules together we can ensure a safe event. When spectators position themselves correctly and avoid creating dangerous situations, such as moving in the road of the Special Stage during competition, competitors can also feel safe while pushing "flat out" and pursuing podium.

You are all most warmly welcome. We hope you enjoy the event! Have a safe rally everyone!

Clerk of the Course Jarno Neuvonen and the entire organisation



# RALLI SM



## SM IMATRA RALLI 22.-23.5.2026

### 1.2 Rally week programme

The rally week's programme is announced in the Supplementary Regulations, which can be found on the official notice board in the Sportity application using the code **IMATRASM2026**

### 1.3 Rally Guide

Start by reading the Supplementary Regulations, the Championship regulations, and the Bulletins, which contain the information you need. The contents of the regulations are not repeated in this guide. Instead, this document compiles other useful information and important phone numbers.

The staff at the Rally Office and the Competitors' Relations Officers are happy to assist you. Current information will be updated in the Sportity application both before and during the event, so please make sure to follow it.

Sportity password: **IMATRASM2026**

### 1.4 Competitors' Relations Officers and their schedule



Ari Uusikartano  
+358 40 356 75 70  
ariuusikartano65@gmail.com



Ari Kuisma  
+358 40 581 77 90  
ari.kuisma@pp3.inet.fi

The Competitors' Relations Officers are available at the start, finish and service areas, and primarily by phone and email throughout the entire event.



# RALLI SM



## SM IMATRA RALLI 22.-23.5.2026

### 1.5. Ticket sales

Sales of rally packages will begin on Wed 20 May 2026.

The rally package includes the spectator guide and a wristband that grants one person access to all special stages. Price: €25. Note: under 18-year-olds free of charge.

1. S-Market Joutseno
2. Huili Korvenkanta
3. Teboil Lappeentie
4. Tebis Vuoksenniska
5. Simpeleen liikenneasema
6. Neste Simpele
7. Kyläkuppila Kämpälämäki
8. Lohelan piha (only Sat 23.5. from 8:00 to 12:00)

Tickets to Special Stages will be sold along the route. SS ticket €15 (entry for one person to one Special Stage)

Tickets are also available in the Corego ticket shop:

<https://www.coregoshop.fi/smimatraralli2026>

The spectator guide will be published on the website [imatraralli.fi](http://imatraralli.fi) on 23 May 2026.

## 2. Before the Rally

### 2.1 Trailer park and recce car park

Trailer park: Located in the Ukonniemi Sports Centre area, near the Service Park.

Recce car park: Next to the trailer park

**BRINGING RECCE CARS INTO THE SERVICE PARK IS STRICTLY PROHIBITED!**

Routes to the Rally HQ, service park and safety scrutineering are signposted with roadside signs.

There is limited space at the Rally HQ, so access to the HQ area is allowed by passenger car only.

Parking near the Rally HQ is available at the end of Torkkelinkatu and in the yard area of the nearby S-market. Otherwise, roadside parking applies.

Please remember to remove the identification numbers from the recce cars immediately after completing reconnaissance.



## SM IMATRA RALLI 22.-23.5.2026

### 2.2 Service Park (map in Sportity)

#### **SERVICE AND REGROUP:**

**Regroup max 15 minutes and min 3 minutes. TC In gives Service Out time and new time card.**

**SERVICE TIME = 30 MINUTES (Flex Service, the competitor decides start and end times within the break)**

The regroup time is spent at your own service area. A note indicating the service start time will be attached to the car's windscreen. TC In will provide a paper on which the times are recorded.

Only rally cars and one service vehicle per crew, equipped with a service area permit, are allowed to enter the service park. The service vehicle permit is included in the material package.

Competitors and their service crew are expected to handle fuel, oil and other liquids with great care. When servicing the rally car, it is mandatory to use an impermeable ground cover and an absorbent mat under both the competition car and the service vehicle. Failure to do so may result in exclusion from the event.

Every rally car must have an oil-spill containment kit capable of collecting the full amount of oil-based fluids contained in the vehicle's systems. The kit must include absorbent material equal to at least the total oil volume in the car, a waste bag, and rubber gloves. The organiser has also provided additional oil-spill response equipment in the service park, which may be used in the event of a larger spill. The location is marked and equipped with the necessary tools for oil collection.

A fire extinguisher (minimum 6 kg) must be available at all times. Open fire is not permitted. Smoking is allowed only in designated areas. If a competitor or their service crew violates these rules, the Stewards may impose penalties up to and including exclusion from the event.

**If service tents are used, they must be secured with weights in such a way that they cannot come loose due to wind or any other mechanical stress. TUKES "Tent Securing Instructions 2025" document must be followed.**

There is a café point in the service park operated by the local baseball club IPV ry.

#### **2.2.1 Electricity in the Service Park**

Additional electricity can be ordered for the service area: 32 A 200 €, 16 A 150 €, standard power 70 €.



## SM IMATRA RALLI 22.-23.5.2026

Orders via email to Secretary of the Rally [anne.m.ristola@gmail.com](mailto:anne.m.ristola@gmail.com) at the latest on Tue 19.5.2026. The electricity will be paid within the administrative check and collection of materials.

### 2.3 Administrative check and collection of materials

Competitors' identities will be checked during the distribution of materials at the Rally Office, Imatra Valtionhotelli, Congress Wing, Torkkelinkatu 4, 55100 IMATRA.

Reconnaissance classes 1–8 and 10–16: Thu 21 May at 18:00–20:00 and Fri 22 May at 07:30–12:00. Other classes 9 and 17–23: Sat 23 May starting at 07:00

The tracking device will be distributed together with the other materials, and the timing transponder will be given at the start of the Rally.

### 2.4 Reconnaissance

The reconnaissance begins on Fri 22 May 2026 at 08:00 and ends on 22 May 2026 at 17:00. The road sections used as special stages may be passed for two (2) times. The organiser will monitor, among other things, the number of passages using the tracking device. For clarification: even for a special stage that will be driven twice during the rally, reconnaissance is still limited to only two (2) passes (not four (4) passes).

During reconnaissance, a speed limit of 80 km/h applies on all special stages unless a lower limit is indicated by traffic signs or signs placed by the organiser. Driving must be conducted in a manner that does not endanger or disturb other traffic or nearby residents. Driving against the direction of the special stage is strictly prohibited by the organiser.

Recce car identification stickers **must be removed immediately** after the reconnaissance period has ended. Cars used for reconnaissance may not be parked in the service park after the reconnaissance has ended. Any violations committed during or related to reconnaissance will be penalised in accordance with Art 19.3 of the Rally Regulations.

### INFORMATION ABOUT PREVIOUSLY DRIVEN SPECIAL STAGES

SS 1 was driven in the same format in the Imatra UA 50<sup>th</sup> Anniversary Rally in 2013

SS 2 was driven in almost the same format in the Imatra UA 50<sup>th</sup> Anniversary Rally in 2013. The initial section on the main road has been removed.

SS 3 and SS 6 Niskalampi (spectator stage) has not been driven before

SS 4 and SS 8 Torsansalo (Torsansalontie) 0,65 km- 11,65 km were driven in the 2025 F-Cup event as Special Stage 1 (km 3–10).

SS 5 Ahjärvi was driven in the same format in the 2024 F-Cup event as Special Stage 1.

SS 7 Kuokkalampi was driven (km 0–10.3) in the Junior Finnish Championship Imatra Rally in 1987 as Special Stage 2, and in the General Finnish Championship Imatra Rally in 1984 as Special Stage 2.



## SM IMATRA RALLI 22.-23.5.2026

### 2.5 Safety Scrutineering (map in the appendices)

Safety Scrutineering is held at Sukkulakatu 13, 55120 IMATRA. Premises of Karjalan Katsastus Oy

Arrive at the safety scrutineering well on time before your reserved time in the Slotti system. Be prepared to present your driving equipment before the safety scrutineering. **The scrutineering form will be available at the scrutineering.**

#### Schedule

Fri 22.5.2026 Classes 1-7      Equipment and safety scrutineering at 16.00-21:10

Sat 23.5.2026 Classes 8-23      Equipment and safety scrutineering starting at 08:00

### **Note! Weighing is mandatory for class SM5.**

### 2.6 Competitors' changing facilities

Competitors have access to changing rooms and shower facilities in the Ukkonniemi Arena locker rooms located within the service park area.

### 2.7 Food and beverage services

There is a café and a sausage grill in the service park area.

The nearest restaurant services are Huili Korvenkanta, Korvenkannantie 71, 55120 IMATRA, and ABC Imatra, Tiedonkatu 2, 55420 IMATRA.

## 3 During the Rally

### 3.1 Identification of officials

The officials and marshals are identifiable as follows:

- SS Commander: red tabard
- SS Safety Officer: green tabard
- Competitor's Relations Officer: red tabard
- Timekeeping, marshals, officials, ticket sales: yellow tabard
- Scrutineering: black tabard

### 3.2 Time card and operations at TCs (instructions for using international time card available in Sportity)

The international time card (3 pcs) is used in the Rally. Time cards will be distributed to competitors at the TC at the start of the rally and at the Service In TCs. The liaison time indicated on the time card is added to the actual start time of the special stage to determine the arrival time at the next TC. Each crew is solely responsible for its own time card. Contrary to the Finnish Rally Championship regulations, at the time control, the time card will be



# RALLI SM



## SM IMATRA RALLI 22.-23.5.2026

handed to the official who will make the entries, not the competitors. A time card example can be found as an appendix.

**Contrary to the Finnish Rally Championship Regulations 2026, the SS organiser will make the entries on the time card.**

### 3.3 Accident procedures, OK/SOS

Use of the warning triangle: If you are forced to stop on a special stage due to an off-road incident or any other reason, the warning triangle must be placed in a clearly visible location on the same side of the road as the car, at least 50 m before the stopped car, to warn other competitors.

#### SOS & OK

If you need assistance in the event of injury, fire, or any similar incident, press the SOS button on the tracking device and clearly display the SOS sign to approaching competitors. Do not leave the sign unattended!

If you see another competitor displaying the SOS sign, you must stop and provide assistance, and if necessary, call for additional help using the tracking device or the emergency number found in the roadbook and on the competitor number. If calling for additional help is not successful, the information must be delivered to the next radio point on the route, which may also be the finish of the special stage.

When calling for additional help, provide the following information:

the competition number of the accident vehicle

- the competition number of the accident vehicle
- the number of injured persons (competitors, spectators, etc.)
- the severity of their injuries
- whether anyone is trapped in the car or pinned underneath it
- the location of the accident (roadbook reference, junction, or other identifiable information)
- any other relevant details (e.g. whether the car is on fire, in water, etc.)

Unobstructed access must be ensured for rescue units by moving any rally cars that have arrived at the scene past the accident location. If this is not possible, the cars must be moved to the side of the road.

If you are forced to retire, notify the Rally HQ and return the GPS tracking device and the timing transponder as soon as possible to the nearest special stage checkpoint, sweeper car, or the rally office.

If you do not require medical assistance, display the green OK sign in your car to other competitors and officials, and press the OK button on the tracking device.



# RALLI SM



## SM IMATRA RALLI 22.-23.5.2026

Remember to press the OK button on the tracking device if you stop on a special stage for any other reason, such as changing a tyre.

### 3.4 Refuelling

All classes will refuel along the route at the gas stations indicated in the roadbook: ABC Imatra (Tiedonkatu 2, 55420 IMATRA), Neste Korvenkanta (Korvenkannantie 71, 55120 IMATRA), Neste Simpele (Asemakatu 30, 56800 SIMPELE) and Simpeleen Liikenneasema/ST 1 Simpele (Mäkiänkiläntie 2, 56800 SIMPELE) directly from the pumps.

Refuelling is also available at the designated refuelling zone located next to the service park (Ottelukatu 9, 55420 IMATRA) and at the refuelling area in the yard of Simpeleen Liikenneasema (Mäkiänkiläntie 2, 56800 SIMPELE), both of which are marked in the roadbook.

### Distances and itinerary

Please note that the area is subject to GPS interference, and distances measured with GPS-based trip meters may be inaccurate. All route distances in the competition materials have been measured with a mechanical trip meter.



### SM IMATRA RALLI 22.-23.5.2026

Route	SS km	Liaison km	Nro 1 due time
Start			10.00
TC 0 - TC 1		9,89 km	
SS 1	11,42 km		10.23
SS 1 finish – TC 2		4,48 km	
SS 2	9,71 km		10.46
SS 2 finish – TC 3		25,69 km	
SS 3	2,20 km		11.33
SS 3 finish – TC 3A Service In		3,83 km	11.45
<b>Section 1 total</b>	<b>23,33 km</b>	<b>43,89 km</b>	
<b>SS and liaison km in total 67,22 km</b>			
Service 1 Regroup max 45 minutes and min 33 minutes, flex service, service time 30 min			
TC 3B Service Out – TC 4		45,88 km	12.30
SS 4	19,87 km		13.25
SS 4 finish – TC 5		23,78 km	
SS 5	7,52 km		14.25
SS 5 finish – TC 6		32,50 km	
SS 6	2,20		15.07
SS 6 finish – TC 6A Service In		3,83 km	15.19
<b>Section 2 total</b>	<b>29,59 km</b>	<b>105,99 km</b>	
<b>SS and liaison km in total 135,58 km</b>			
Service 2 Regroup max 45 minutes and min 33 minutes, flex service, service time 30 min			
TC 6B Service Out – TC 7		21,76 km	16:04
SS 7	13,18 km		16:45
SS 7 finish – TC 8		22,80 km	
SS 8	19,87 km		17:26
<b>SS 8 finish – TC 8A finish (early check-in permitted)</b>		53,22 km	
<b>Section 3 total</b>	<b>33,05 km</b>	<b>97,78 km</b>	18:37
<b>SS and liaison km in total 130,83 km</b>			
<b>Route in total</b>	<b>85,97 km</b>	<b>247,66</b>	
<b>Total distance 333,63 km</b>			

### 3.5 Finish and prize-giving

The finish of the rally is located on Jukankatu in the centre of Imatra. Immediately after the final time control, the GPS tracking device and the timing transponder will be collected. After this, crews will proceed to the regroup area. In the regroup area, the competitors to be awarded will be arranged in the correct order for the prize-giving ceremony.

Prizes will be awarded based on the provisional results. The prizes are memorabilia. If changes occur to the list of awarded competitors in the official results, the competitor is obliged to return any prizes received.

The number of awarded competitors will be announced on the official notice board.

**Note! Only the awarded cars will drive under the finish arch. All others must follow the organiser's instructions for exiting the area.**



## SM IMATRA RALLI 22.-23.5.2026

### 3.6 Technical check

Any possible post-event technical checks will be carried out at Karjalan Katsastus Oy, Sukkulakatu 13, 55120 IMATRA (the same location as the safety scrutineering).

## 4 After the Rally

### 4.1 Cleaning the Service Park

After the rally, please ensure that your service area is left clean. There are plenty of waste bins available in the area, including separate containers for bottles and cans. The service park also has dedicated recycling containers for hazardous waste, batteries, and waste oil.

## 5 Important phone numbers

CLERK OF THE COURSE	Jarno Neuvonen	+358 44 989 43 40
CLERK OF THE COURSE, ROUTE	Jari Jakonen	+358 440 846 635
CHIEF SAFETY OFFICER	Kimmo Marttinen	+358 45 861 1300
RALLY OFFICE	Anne Ristola	+358 400 431 413
SERVICE PARK	Kimmo Tella	+358 40 751 7706

### GENERAL EMERGENCY NUMBER 112

**SOUTH KARELIA CENTRAL HOSPITAL** Valto Käkelän katu 1, 53130 LAPPEENRANTA  
+358 53527260

### EMERGENCY MEDICAL HELPLINE 116117

### TOWING SERVICES

Hinausautot Purhonen 24/7  
+358 5 4720 072

Appendices:

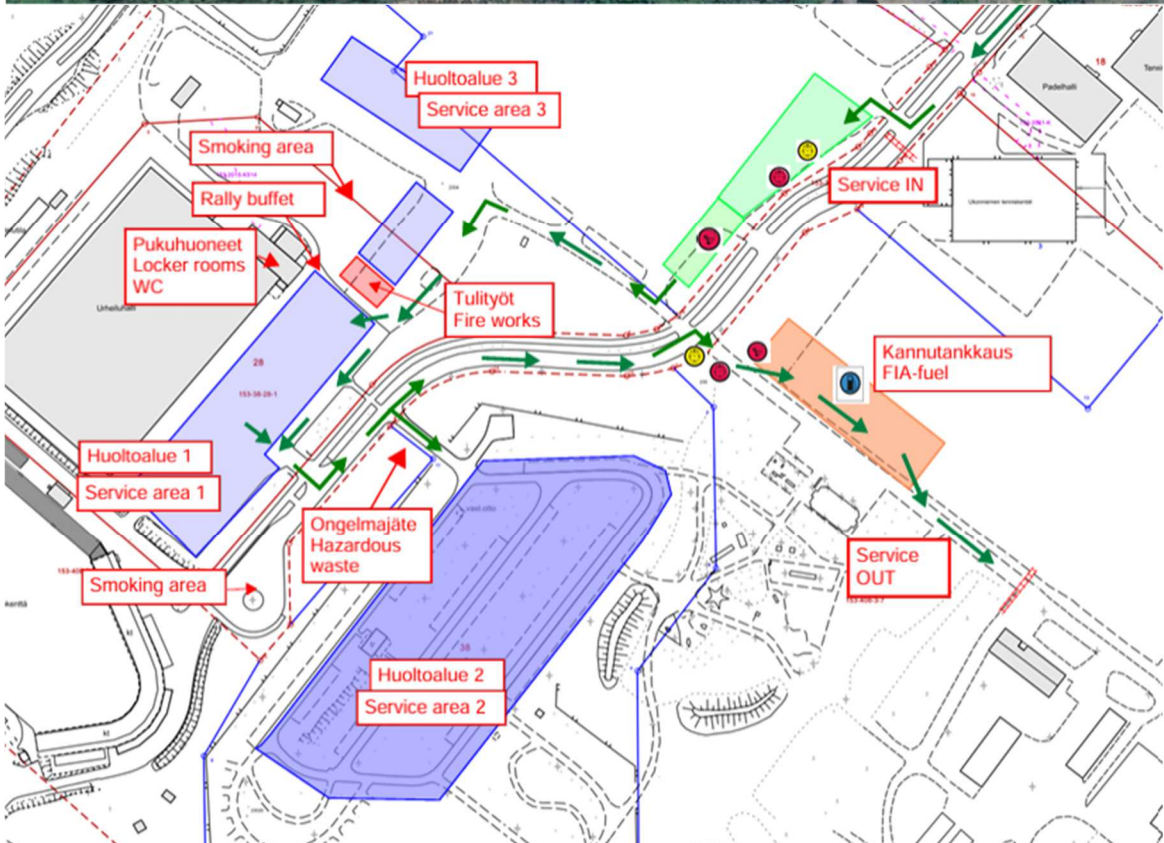
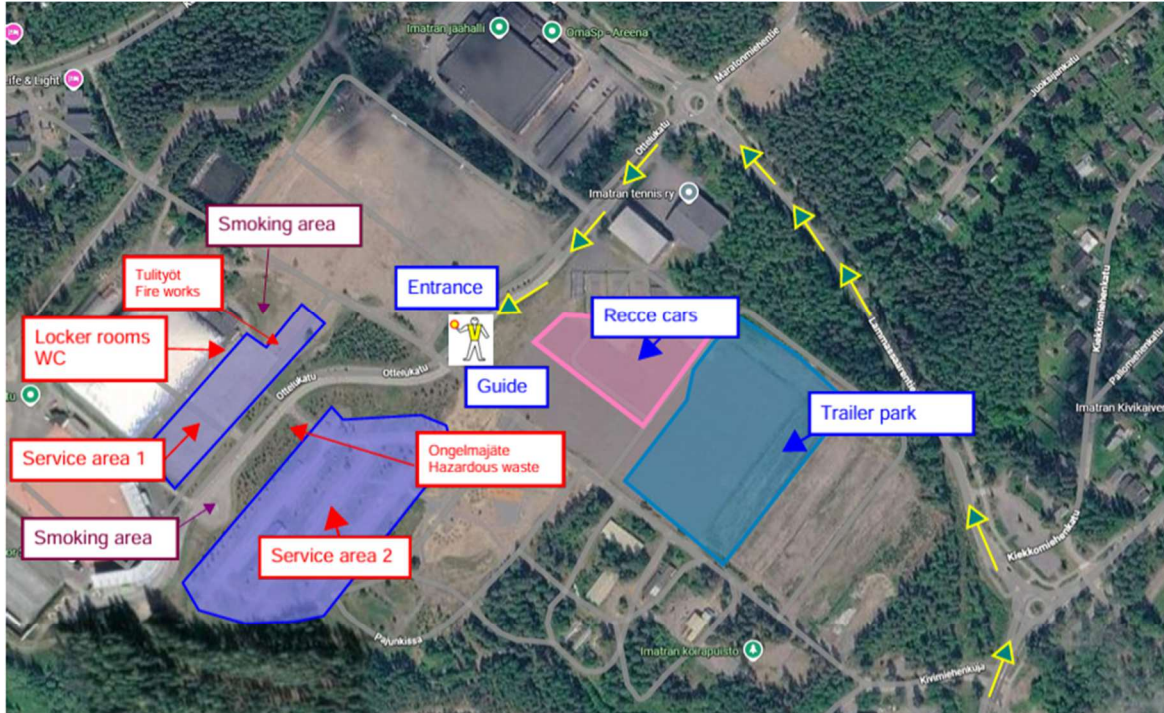


# RALLI SM



SM IMATRA RALLI 22.-23.5.2026

## SERVICE PARK





# RALLIS M



SM IMATRA RALLI 22.-23.5.2026

## SAFETY SCRUTINEERING





# RALLI SM



## SM IMATRA RALLI 22.-23.5.2026

### ITINERARY

SM Imatra Ralli 2026			
REITTI:	PITUUS:	AJOAIKA:	NRO 1
	km		
<b>LÄHTÖ/START TC 0</b>			<b>10:00</b>
TC 0 - TC 1	9,89 km	0:20:00	10:20
<b>SS 1 START</b>		<b>0:03:00</b>	<b>10:23</b>
SS 1 END	11,42 km	0:08:00	10:31
SS 1 END - TC 2	4,48 km	0:12:00	10:43
<b>SS 2 START</b>		<b>0:03:00</b>	<b>10:46</b>
SS 2 END	9,71 km	0:08:30	10:52
SS 2 END - TC 3	25,69 km	0:38:00	11:30
<b>SS 3 START</b>		<b>0:03:00</b>	<b>11:33</b>
SS 3 END	2,20 km	0:01:30	11:35
SS3 END - TC 3A	3,83 km	0:10:00	11:45
Service in TC 3A			11:45
Service out TC 3B		0:45:00	12:30
TC 3B - TC 4	45,88 km	0:52:00	13:22
<b>SS 4 START</b>		<b>0:03:00</b>	<b>13:25</b>
SS 4 END	19,87 km	0:12:00	13:37
SS 4 END - TC 5	23,78 km	0:45:00	14:22
			14:22
<b>SS 5 START</b>		<b>0:03:00</b>	<b>14:25</b>
SS 5 END	7,52 km	0:05:00	14:30
SS 5 END - TC 6	32,5 km	0:34:00	15:04
<b>SS 6 START</b>		<b>0:03:00</b>	<b>15:07</b>
SS 6 END	2,20 km	0:01:30	15:08
SS 6 END - TC 6A	3,83 km	0:11:00	15:19
Service in TC 6A			15:19
Service out TC 6B		0:45:00	16:04
TC 6B - TC 7	21,76 km	0:38:00	16:42
<b>SS 7 START</b>		<b>0:03:00</b>	<b>16:45</b>
SS 7 END	13,18 km	0:08:00	16:53
SS 7 END - TC 8	22,80 km	0:30:00	17:23
<b>SS 8 START</b>		<b>0:03:00</b>	<b>17:26</b>
SS 8 END	19,87 km	0:12:00	17:38
SS 8 END -FINISH	53,22 km	0:59:00	18:37
<b>Maali/ Finish</b>			<b>18:37</b>



# RALLI SM



## SM IMATRA RALLI 22.-23.5.2026

### TIME CARD EXAMPLE

Car no.		SM IMATRA RALLI		TIMECARD A	
		22.-23.5.2026		Leg 1 23.5.2026	
TC START	0	ACTUAL START		COMPETITOR USE	
		TARGET TIME		DUE TIME	
		00 20			
RT / RC					
TC 1					
SS 1, Myllymäki	11.42 km	FINISH TIME		COMPETITOR USE	
		PROVISIONAL START		DUE TIME	
		ACTUAL START		TARGET TIME	
		00 20			
FALSE START					
TC 2					
SS 2, Luiska	9.71 km	FINISH TIME		COMPETITOR USE	
		PROVISIONAL START		DUE TIME	
		ACTUAL START		TARGET TIME	
		00 44			
FALSE START					
TC 3					
SS 3, Niskalampi 1	2.20 km	FINISH TIME		COMPETITOR USE	
		PROVISIONAL START		DUE TIME	
		ACTUAL START		TARGET TIME	
		00 12			
FALSE START					
TC 3A					
TC 3A					

Keskeyttämisilmoitukset: p. +358 45 333 6342  
Retirements: Tel. +358 45 333 6342

Car no.		SM IMATRA RALLI		TIMECARD B	
		22.-23.5.2026		Leg 2 23.5.2026	
		SERVICE START		COMPETITOR USE	
		FLEX HUOLTO		DUE TIME	
		FLEX SERVICE		00 30	
		SERVICE END			
TC 3B		TARGET TIME		DUE TIME	
		00 52			
PROVISIONAL TIME		ACTUAL TIME			
TC 4					
SS 4, Toivonharjo 1	19.87 km	FINISH TIME		COMPETITOR USE	
		PROVISIONAL TIME		DUE TIME	
		ACTUAL START		TARGET TIME	
		00 57			
FALSE START					
TC 5					
SS 5, Aihovi	7.52 km	FINISH TIME		COMPETITOR USE	
		PROVISIONAL START		DUE TIME	
		ACTUAL START		TARGET TIME	
		00 40			
FALSE START					
TC 6					
SS 6, Niskalampi 2	2.20 km	FINISH TIME		COMPETITOR USE	
		PROVISIONAL START		DUE TIME	
		ACTUAL START		TARGET TIME	
		00 12			
FALSE START					
TC 6A					
TC 6A					

Keskeyttämisilmoitukset: p. +358 45 333 6342  
Retirements: Tel. +358 45 333 6342

Car no.		SM IMATRA RALLI		TIMECARD C	
		22.-23.5.2026		Leg 3 23.5.2026	
		SERVICE START		COMPETITOR USE	
		FLEX HUOLTO		DUE TIME	
		FLEX SERVICE		00 30	
		SERVICE END			
TC 6B		TARGET TIME		DUE TIME	
		00 33			
PROVISIONAL TIME		ACTUAL TIME			
TC 7					
SS 7, Luiska	13.18 km	FINISH TIME		COMPETITOR USE	
		PROVISIONAL TIME		DUE TIME	
		ACTUAL START		TARGET TIME	
		00 38			
FALSE START					
TC 8					
SS 8, Toivonharjo 2	19.87 km	FINISH TIME		COMPETITOR USE	
		PROVISIONAL TIME		DUE TIME	
		ACTUAL START		TARGET TIME	
		01 11			
FALSE START					
TC 8A					
TC 8A					

Keskeyttämisilmoitukset: p. +358 45 333 6342  
Retirements: Tel. +358 45 333 6342