

# SM Olli Jalonen Rally

## 8-9.9.2017



## RALLY GUIDE

## Index

1. General Information.....	3
1.1 Word from the Clerk of Course.....	3
1.2 Schedule .....	4
1.3 Contact details .....	5
1.4 Old pacenotes .....	5
2. Important to know – Before the rally.....	5
2.1 Administrative checks .....	6
2.2 Reccosaince.....	6
2.3 Scrutineering .....	6
2.4 Service area .....	7
3. Important to know – during the rally .....	7
3.1 Start.....	8
3.2 Servicing .....	8
3.3 Re-fueling .....	8
3.3.1 Re-fueling schedule:.....	8
3.3.2 Re-fuel locations.....	8
3.4 Retirement.....	9
3.5 Finish.....	9
3.6 Price giving ceremonies .....	9

## Attachments

- Map of Uusikaupunki
- Map of Service area
- Map of Scrutineering area
- Reccosaince information form
- Service crew contact information form
- Information for the commentator (at Start)
- Time card sample
- Tyre barcode form (separate attachment)
- Timetable for the rally (separate attachment)
- GPS- tracking device guide (separate attachment)

## 1. General Information

### 1.1 Word from the Clerk of Course

Dear participant of SM Oili Jalonen Rally

I'm honored to welcome you to the SM Oili Jalonen Rally to the city of Uusikaupunki when Finland is celebrating its 100 year of independence.

We hope that our rally gathers together the Finish top rally drivers to the interesting roads of southwest Finland. We have tried to create the best possible circumstances for the rally, especially the safety of competitors and spectators.

Rally HQ is situated in the Hotel Aquarius as usual. You will have locker rooms and showers reserved for your use and after the race there is possibility to eat and even party in the Rally HQ.

Services are done in the service park at the Uusikaupunki Ice Rink parking areas, Scrutineering in the A-katsastus facility at Uusikaupunki. Please take special notice to the scrutineering info on this Rally Guide. Start and Finish are both at the city center, Alinenkatu.

This years route goes through the municipals of Uusikaupunki, Laitila, Pyhäranta and Vehmaa and includes the demanding spectator stage at the Pajala industrial area.

I would like to draw your attention to the Friday reconnaissance. Friday is a normal school/workday so please respect the other road users on Friday by lowering speeds when encountering. We don't want to increase any negative atmosphere against rallying.

This guide will ease your race day, so please have good look at this guide.

Welcome to Uusikapunki!

Henry Anttila  
Clerk of Course  
SM Oili Jalonen Ralli 2017

## 1.2 Schedule

01.09.2017 Friday

List of accepted entries and rally guide will be published

08.09.2017 Friday

08:00 Rally HQ opens, Hotel Aquarius, Kullervontie 11, 23500 Uusikaupunki.

08:00 Administrative checks and distribution of reconnaissance materials for classes 1 – 15. at Rally HQ, Hotel Aquarius, Kullervontie 11, 23500 Uusikaupunki

09:00 Reconnaissance starts on stages 1-3 and 5-8, classes 1 – 15.

18:00 Reconnaissance ends on stages 1-3 and 5-8.

18:00 Reconnaissance starts on stage 4, classes 1 – 15.

20:00 Reconnaissance ends on stage 4.

17:00 Voluntary scrutineering for classes 1 – 15 begins in Välttitie 7, Uusikaupunki, A- katsastus

21:00 Voluntary scrutineering ends.

21:00 Rally HQ closes

09.09.2017 Saturday

07:00 Rally HQ opens, Hotel Aquarius Kullervontie 11, 23500 Uusikaupunki.

08:00 Scrutineering starts, A-katsastus, Välttitie 7, 23500 Uusikaupunki

09:00 Start list publishing time, will be uptaded at 30 min intervals

10:01 Start of the rally, Uusikaupunki market place / Alinenkatu

13:00 Spectator stage, stage 4, Pajala industrial area

13:44 Service halt at Service park

18:40 Rally finish, Uusikaupunki market place / Alinenkatu

starting at 18:40, Prize giving ceremonies for classes 1 – 6 at the finish line by unofficial results

starting at 18:40 Technical scrutineering, Huoltorengas Laiho, Autotehtaankatu 9, 23500 Uusikaupunki

20:00 Publication of official results for classes 1 – 6

20:30 Publication of official results for classes 7 – 25

21:00 Prize giving ceremonies for classes 7 – 25 at Rally HQ .

22:00 Rally HQ, Media Center and Service Park closes



### 1.3 Contact details

RALLY HQ		MEDIA CENTER	
Location	Hotel Aquarius,	Location	08.09.2017, Hotel Aquarius 09.09.2017, Pohituli School
Address	Kullervontie 11 B, 23500 Uusikaupunki	Address	08.09.2017, Kullervontie 11 B, 23500 Uusikaupunki 09.09.2017, Viikaistenkatu 3, 23500 Uusikaupunki
Telephone	+358 2 844 1597, +358 400 784 372	Telephone	+358 40 701 5912
E-mail	<a href="mailto:tms@tms.fi">tms@tms.fi</a>	E-mail	<a href="mailto:tommi@pico.fi">tommi@pico.fi</a>
Contact person	Mrs. Elisa Kant	Contact person	Mr. Tommi Honkanen
Opening hours	Friday 8.9, 08:00 – 20:00 Saturday 9.9, 07:00 – until rally finishes	Opening hours	Friday 8.9, 09:00 – 20:00. Saturday 9.9, 09:00- until rally finishes

Locker rooms for competitors are reserved in the Rally HQ also after the race there is possibility for shower. Rally HQ has guides for these rooms.

Competitors relations officer

Otto Aro

+358 405878830

Possible protest will be called to this number also. Photo will be on the official notice board.

Schedule for relations officer:

Friday 8<sup>th</sup>

8 – 21 Rally HQ

Saturday 9<sup>th</sup>

7 – 8 Rally HQ

8 – 10.30 Scrutineering

13.30 – 18.00 Service park

18.30 – 20.00 Finish line

20.15 - until end of rally, Rally HQ

### 1.4 Old pacenotes

Last time rally was driven with pacenotes in this region 2008, so we recommend making of totally new notes.

## 2. Important to know – Before the rally

Sadly there is no Shakedown-stage available.

## 2.1 Administrative checks

Competitors in classes 1 – 15 can pick up their pre reconnaissance material at administrative checks on Friday 8<sup>th</sup> of September starting at 8pm at the Rally HQ, Hotel Aquarius, Kullervontie 11 B, Uusikaupunki. Material includes:

- 2 route maps
- Road book
- Driving permit for the service vehicle
- Number stickers
- Stickers for the reconnaissance vehicle
- GPS-tracking device

Both, driver and co-driver must attend to these administrative checks and prove their identity (passport/driving license). Also the entrant license will be checked. After signing all the material, the competitor must give back the reconnaissance form, commentator form and service form. These forms are as attachment to this Guide.

**After reconnaissance the competitor must return the GPS-tracker back to Rally HQ for charging.** It must be picked up back on Saturday, starting at 7.00. Time keeping transponder will be distributed at the same time also on Saturday.

Crews in the classes 16 – 25 will get their material at the administrative checks on Saturday 9<sup>th</sup> of September starting at 7.00, from the Rally HQ, Hotel Aquarius, Kullervonkatu 11, 23500 Uusikaupunki. Material includes :

- 2 route maps
- Road book
- Driving permit for the service vehicle
- Number stickers
- GPS-tracking device
- Time keeping transponder

## 2.2 Reconnaissance

Reconnaissance time for classes 1 – 15 is on Friday 8<sup>th</sup> of September from 9am to 6pm, except for special stage number 4 where the reconnaissance starts at 6pm and ends at 8pm. You are only allowed to reconnaissance every stage twice and that also includes stages that are run twice in the race

Competitor numbers 1 – 27 would start from SS 1/5 , and we recommend to continue as:  
SS 2/6 -> SS 3 (twice) -> SS 1/5 -> SS 2/6 -> SS 7 -> SS 8 -> SS 7 -> SS 8

Competitor numbers 28– 54 would start from SS 7, and we recommend to continue as:  
SS 8 -> SS 7 -> SS 8 -> SS 1/5 -> SS 2/6 -> SS 3 (twice) -> SS 1/5 -> SS 2/6

Competitor numbers 55 – 80 would start from SS 3 (driving it twice), and we recommend to continue as:  
SS 1/5 -> SS 2/6 -> SS 1/5 -> SS 2/6 -> SS 7 -> SS 8 -> SS 7 -> SS 8

At SS 4 we hope that you would go by according following timetable:

- Competitor numbers 1 - 27 , 18.00 – 18.40
- Competitor numbers 28 – 54, 18.40 – 19.20
- Competitor numbers 55 – 80, 19.20 – 20.00

## 2.3 Scrutineering

Scrutineering takes place at the A-katsastus facilities in Välttitie 7, 23500 Uusikaupunki.

Chief Scrutineer Timo Sandholm +358 50 464 3094  
Scrutineering starts at 08:00 on 9th of September.

Voluntary scrutineering for classes 1 to 15, takes place on Friday 8<sup>th</sup> of September from 17.00 to 21.00

We have three lines for scrutineering, one for R5 cars, one for other Turbo cars and one for all the rest. Marshall will be guiding you to the right line. Scrutineering log sheet will be giving at the scrutineering TC.

**Organiser insist that cars in classes 1 to 4 which will need measuring, checking or sealing of turbos or pop-up valves will be scrutineered on Friday 8<sup>th</sup>.** Remember to inform your arrival to the chief scrutineer, Timo Sandholm by e-mail [sandholmwirmo@gmail.com](mailto:sandholmwirmo@gmail.com). He will give your time for Friday scrutineering. Seal threads for the turbos and pop-up valves must be installed beforehand according to the technical rules and measuring of the restrictor must be possible without any disassembling.

Competitor in classes 1 – 15 which cars don't have turbos or pop-up valves can be brought for voluntary scrutineering on Friday, please inform your arrival to the chief scrutineer, Timo Sandholm by e-mail [sandholmwirmo@gmail.com](mailto:sandholmwirmo@gmail.com). He will give your time for Friday scrutineering

Please remember to bring to the scrutineering: Technical passport, FIA homologation documents, if needed certificate/homologation for the roll cage, certificate for the catalysator, registration book or the Finish transfer permit and the tyre barcode form filled! You can mark up to 10 tyres for this event and if you have tyres without FIA barcode, please bring those to the scrutineering for marking. Tyre limitations are for classes 1 to 6 only.

**Remember that if you use your own traffic insurance, it must cover ALL damages to the counterpart, car, people and as well the environment. If you have any thoughts about your traffic insurances insufficiency, please use Finish transfer permit plates and insurance. We will happily help you in getting of those.**

**Scrutineering for classes 16 to 25 takes place only on Saturday 9<sup>th</sup> of September**

Timetable for Saturday scrutineering:

Competitor number	Time	Competitor number	Time
1 - 30	8.00 – 8.30	31 - 60	8.31 – 9.00
61 - 80	9.01 – 9.30	81 - 95	9.31 – 10.00

## 2.4 Service area

All services will be made in the service park at the Uusikaupunki ice rink parking lot (Koulupolku 1, 23500 Uusikaupunki). **You shall not arrive to the service area any before than at 17.00 on Friday 8<sup>th</sup> of September. The area is not on our use any before that time!** Please check your service place from the map attached to this document. There are no security services organized by organizer during the Friday – Saturday night!

There is a buffet in the service park for food and beverages; also a result screen is right next to it.

## 3. Important to know – during the rally

There will be either wooden sticks (painted + warning foil), hay bales or truck tires on the route to prevent cutting. Also on the SS4 there will be plastic fences to prevent cutting. **Please note that on SS4 there will be no pre signs for junctions, only the red signs!**

### 3.1 Start

There is no parc ferme at rally start. We recommend arriving to the start area about 10 minutes before your starting time but at least 5 minutes before the starting time.

Start takes place at the Uusikaupunki market place at Alinenkatu. Time cards will be hand over at the start TC 0. The time card is not the traditional timecard in Finland, but despite the looks of it it is NOT the international time card! Sample of the time card is as an attachment. The list of accepted starters is available at the official notice boards and it is updated at 30 minute intervals.

### 3.2 Servicing

There are 2 service times at the rally. First one is after SS4 at the service halt. The service halt uses Flexi-service. Regroup time is 0 to 30 minutes

You will arrive to the service halt through TC 4C where you will be hand over a document stating your time when you can start servicing. After receiving your time, please drive to your service place and get out of the car right away. Official time is the stating time. You shall not start servicing before your time, if done so it leads to the exclusion from the event, by the decision of the Clerk of the Course. There are officers in the service area for monitoring this rule. Arrival to the TC 4C can be done early, there is no penalty for early arrival. Service time is 43 minutes incl. 3 minutes reserved for the technical zone.

Second service is after SS 6 on the liaison section, service time is about 20 minutes. This time is included in the liaison time of TC6B – TC7A.

### 3.3 Re-fueling

Re-fueling is possible after SS 2 on liaison section, on the liaison after the service halt and on the liaison of service after SS 6. Re-fueling takes place either on the petrol station or in the re-fueling zone nearby. Paying on the petrol stations is possible by credit cards (VISA/MasterCard), debit cards or by cash.

#### 3.3.1 Re-fueling schedule:

	SS-kilometers	Liaison kilometers	Total kilometers
Start – Re-fuel 1	28,38	41,62	70,00
Re-fuel 1 – Re-fuel 2	10,56	51,73	62,29
Re-fuel 2 – Re-fuel 3	28,38	70,11	98,49
Re-fuel 3 - Finish	30,22	37,66	67,88

#### 3.3.2 Re-fuel locations

Re-fuel 1, after SS 2 at Neste Taivassalo, Turuntie 47, 23310 Taivassalo

21°36'42.2" E , 60°33'53.1" N

Re-fuel 2, after service halt at the Neste Uusikaupunki, Autotehtaankatu 9, 23500 Uusikaupunki

21°26'41.7" E , 60°48'21.1" N

Re-fuel 3, after second service at the Neste Uusikaupunki, Autotehtaankatu 9, 23500 Uusikaupunki

21°26'41.7" E , 60°48'21.1" N

We hope that arriving to the re-fuel zone will not be made any before than 15 minutes before your competitor in question comes to the area. First competitor will be in re-fuel 1 at approx. 11.27. On re-fuels 2 and 3 we recommend driving behind your competitor to the re-fueling. Re-fueling at the service area is prohibited!

E85-fuel is not available in the city of Uusikaupunki! Closest available stations are in Raisio (ABC and ST1) and in Säkylä (ABC).



### 3.4 Retirement

If you have to retire the event please inform about it immediately to the Rally HQ phone number: +358 500 556 711.

Timekeeping transponder and GPS-tracking device must be returned to the nearest TC or to the sweeper car with the retirement announcement found on the time card.

### 3.5 Finish

Rally finish is situated at the same place as the start, Uusikaupunki market place, Alinenkatu. Early arrival to the finish TC is not punished. Three best drivers in classes 1 to 6 are guided to the price giving ceremonies at the market place.

### 3.6 Price giving ceremonies

Price giving for the classes 1 to 6 will take place at the finish area right after arrival by the unofficial results. Due to weather conditions the price giving ceremony can be moved to the Rally HQ, it will be informed on the finish line if needed. Three best drivers are awarded in each class.

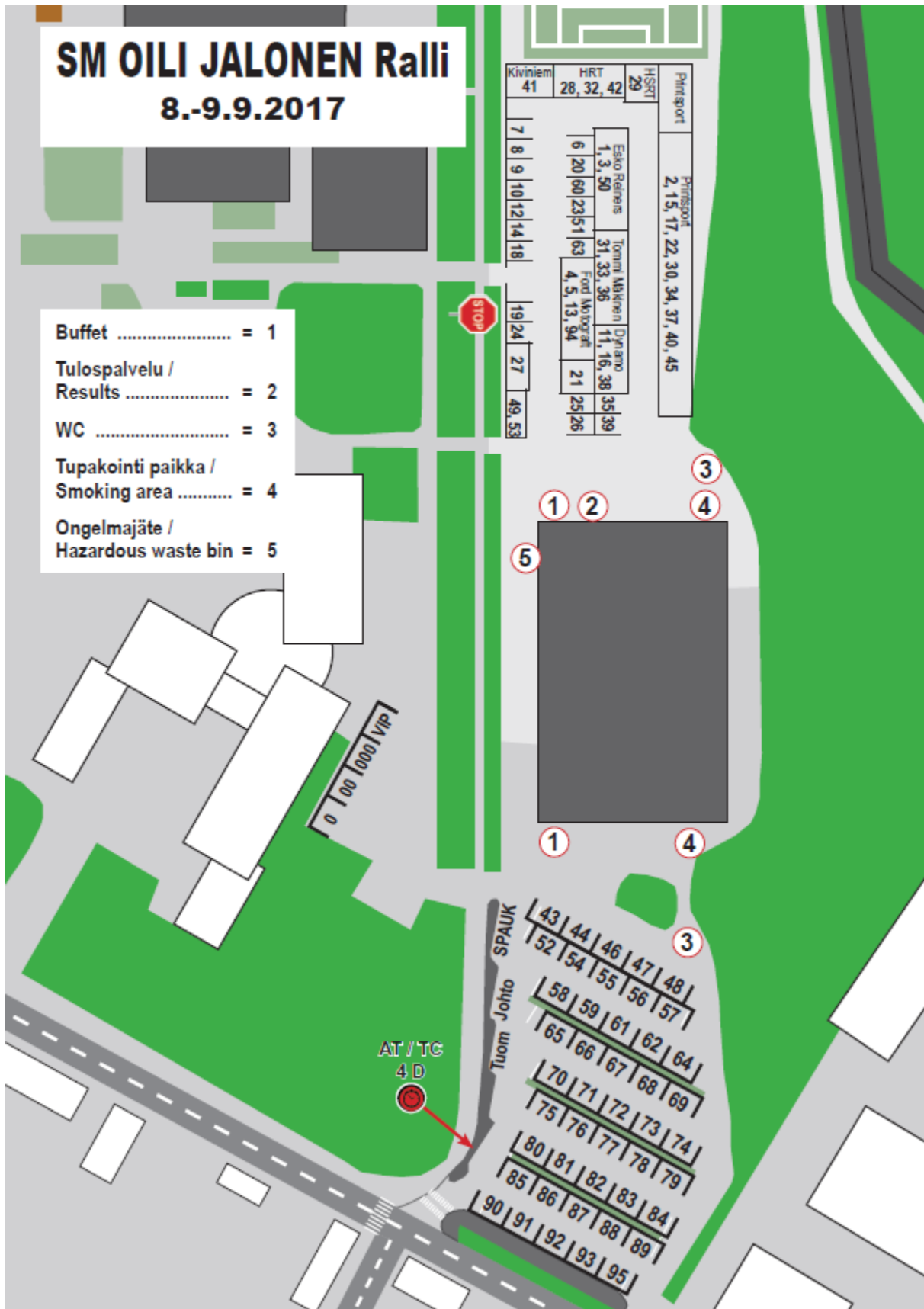
Price giving for the classes 7 to 25 will take place at the Rally HQ by the official results.

List of price awarding drivers:

Class	Entries	Prizes for
1	16	3
2	11	3
3	17	3
4	10	3
5	14	3
6	5	3
7	0	0
8	0	0
9	0	0
10	0	0
11	2	1
12	2	1
13	0	0
14	1	1
15	2	1
16	0	0
17	3	1
18	0	0
19	1	1
20	1	1
21	4	2
22	0	0
23	1	1
24	1	1
25	4	2

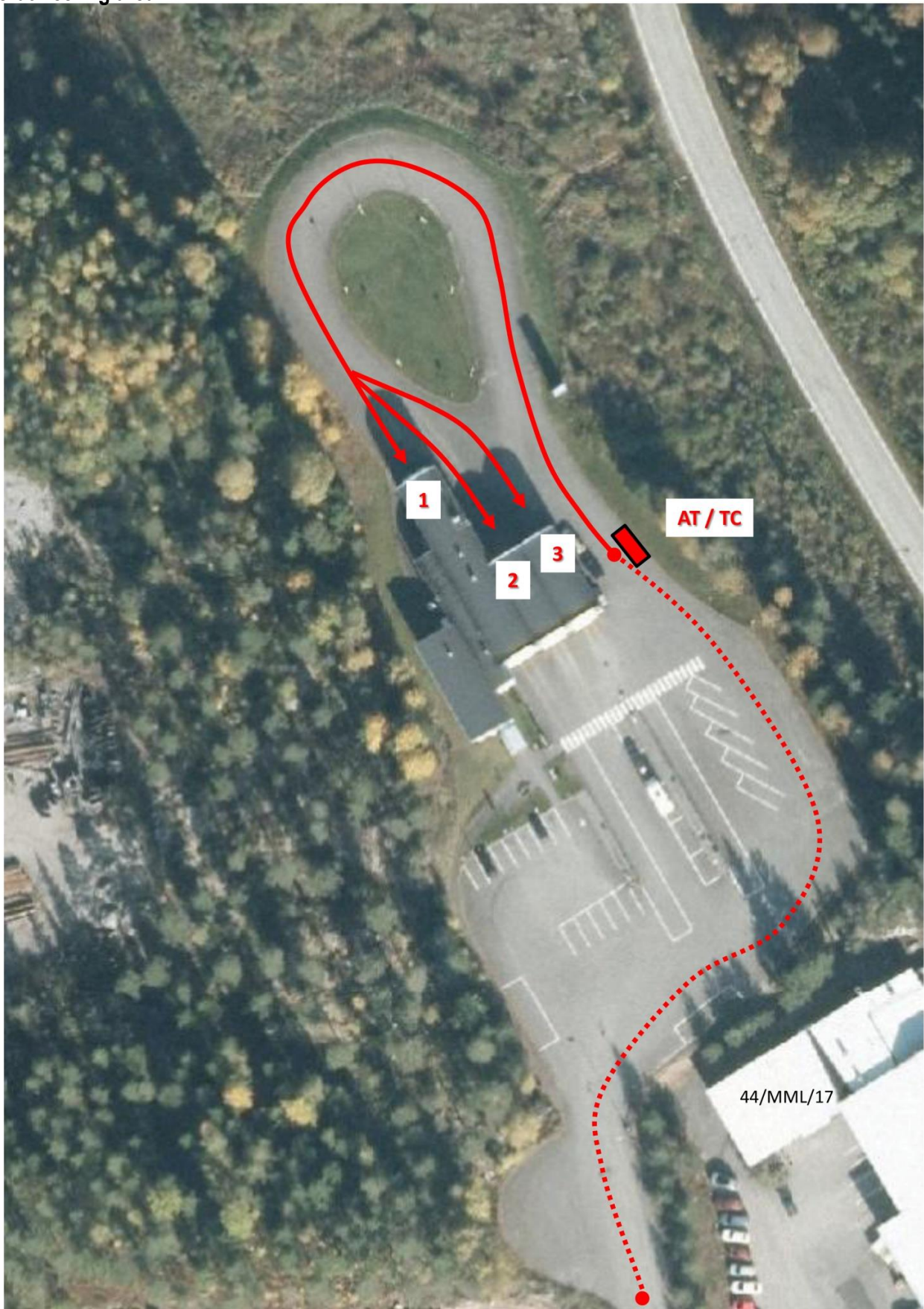


# Service area





Scrutineering area



There will be a marshall to guide you to the right line.

**Reccosaince information form**

Competitor number \_\_\_\_\_

Driver \_\_\_\_\_

Co-driver \_\_\_\_\_

Reccosaince vehicle

Make \_\_\_\_\_

Model \_\_\_\_\_

License plate number \_\_\_\_\_ Colour \_\_\_\_\_

Phone numbers (with regional codes) during the reccosaince

Driver \_\_\_\_\_

Co-driver \_\_\_\_\_





**Service crew information form**

Competitor number \_\_\_\_\_

Service vehicle

Make \_\_\_\_\_

Model \_\_\_\_\_

License plate number \_\_\_\_\_ Colour \_\_\_\_\_

Phone numbers (with regional codes) during the race

Driver \_\_\_\_\_

Co-driver \_\_\_\_\_



Information for the commentator

Competitor number \_\_\_\_\_

Class \_\_\_\_\_

Driver, name

\_\_\_\_\_

Club

\_\_\_\_\_

Achievements

\_\_\_\_\_

\_\_\_\_\_

Co-Driver, name

\_\_\_\_\_

Club

\_\_\_\_\_

Achievements

\_\_\_\_\_

\_\_\_\_\_

Car information

\_\_\_\_\_

\_\_\_\_\_

Sponsors

\_\_\_\_\_

\_\_\_\_\_

## Time card sample

Aikakortti / Time Card 1 - SM Olli Jalonen Ralli

Kilpailijanumero

Ihante lähtöaika		Lähtöaika		Ajoaika / Target time	
AT / TC 0	H MIN	→	H MIN	→	21 min
Provisional Start Time		Actual Start		11,79 km	
EK / SS 1	9,25 km	Ihante lähtöaika		Lähtöaika / Actual Start	
Perkiö	H MIN	→	H MIN	→	H MIN
AT / TC 1A	Provisional Start Time				
Maali / Finish	H MIN S	1/10	Maksimiaika / Maximum time 16 min		
AT / TC 1B					
Ajoaika / Target time	28 min	17,20 km	Vilppi	RT / PC	
		Jump Start			
EK / SS 2	19,13 km	Ihante lähtöaika		Lähtöaika / Actual Start	
Puotila	H MIN	→	H MIN	→	H MIN
AT / TC 2A	Provisional Start Time				
Maali / Finish	H MIN S	1/10	Maksimiaika / Maximum time 32 min		
AT / TC 2B					
Ajoaika / Target time	57 min	31,75 km	Vilppi	RT / PC	
		Jump Start			
EK / SS 3	6,45 km	Ihante lähtöaika		Lähtöaika / Actual Start	
Varanpää	H MIN	→	H MIN	→	H MIN
AT / TC 3A	Provisional Start Time				
Maali / Finish	H MIN S	1/10	Maksimiaika / Maximum time 11 min		
AT / TC 3B					
Ajoaika / Target time	45 min	26,81 km	Vilppi	RT / PC	
		Jump Start			
EK / SS 4	4,11 km	Ihante lähtöaika		Lähtöaika / Actual Start	
Pajala	H MIN	→	H MIN	→	H MIN
AT / TC 4A	Provisional Start Time				
Maali / Finish	H MIN S	1/10	Maksimiaika / Maximum time 7 min		
AT / TC 4B					
Ajoaika / Target time	10 min	1,46 km	Vilppi	RT / PC	
		Jump Start			
AT / TC 4C	H MIN	RT / PC		Ennakkovapaa	
				Early arrival not penalized	

Time card size is 1/3rd of A4 paper. Please note that this is NOT the international time card even though it looks like one.